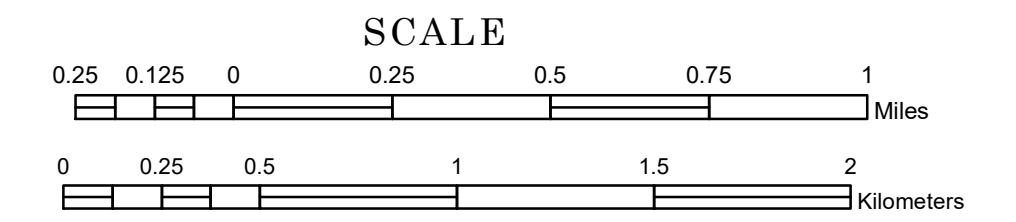


TOWNSHIP OF ROSENDALE

PREPARED BY THE
MINNESOTA DEPARTMENT OF TRANSPORTATION
OFFICE OF TRANSPORTATION SYSTEM MANAGEMENT

IN COOPERATION WITH
U.S. DEPARTMENT OF TRANSPORTATION
FEDERAL HIGHWAY ADMINISTRATION



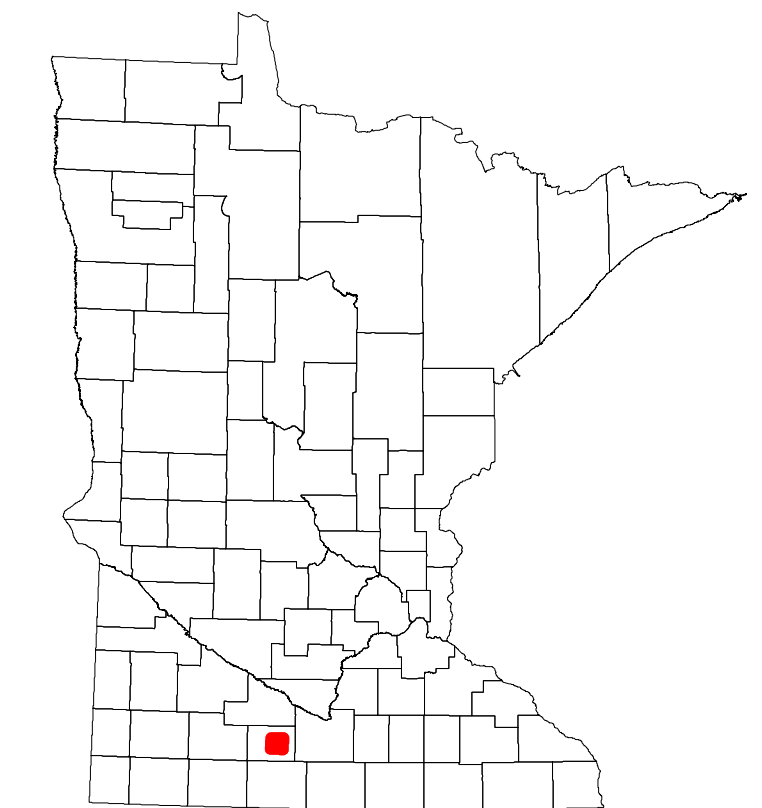
1 in = 1,600 ft
2022

Projection:
Transverse Mercator
NAD 1986
UTM Zone 15

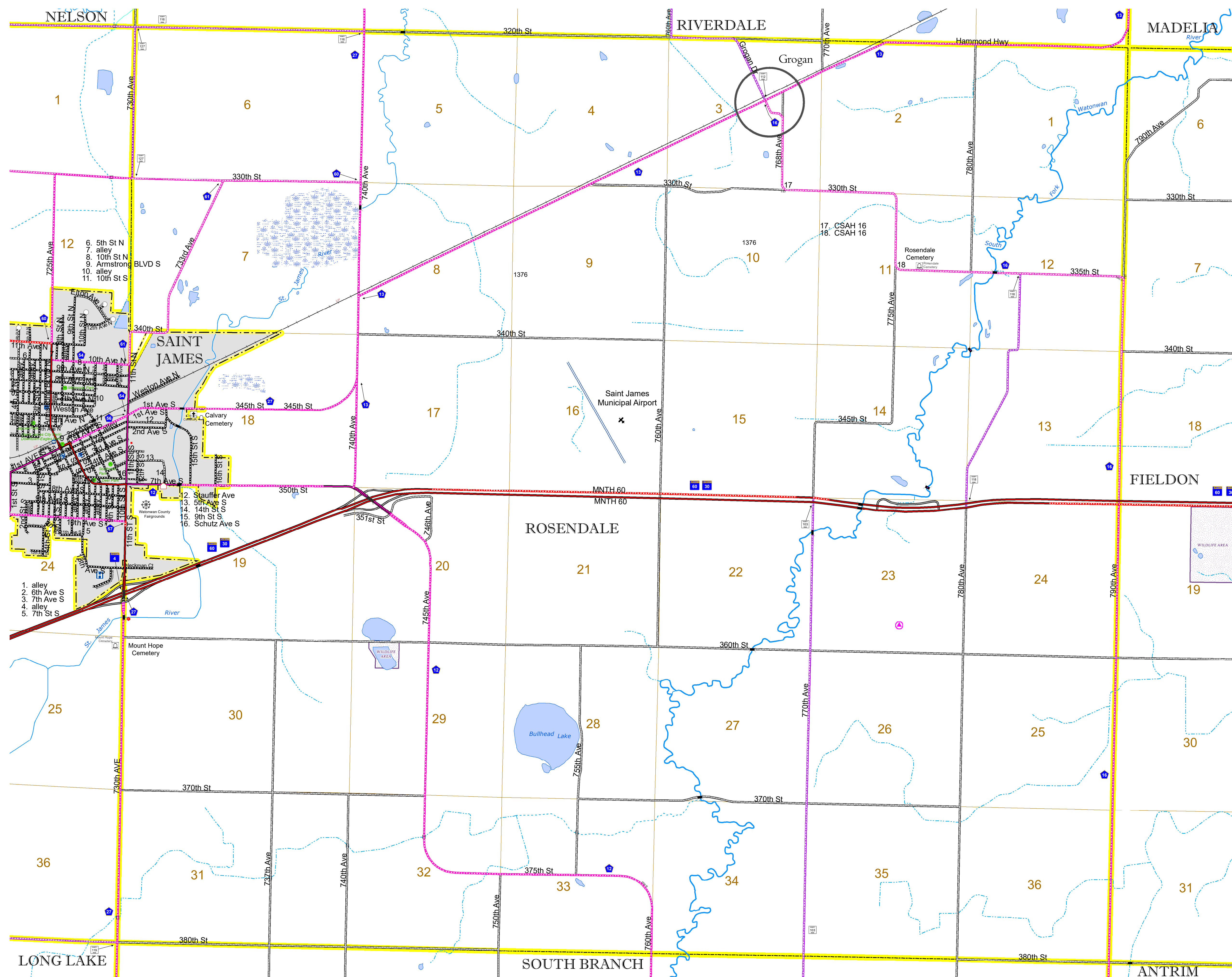


North American Datum
of 1986

ROAD AND ROADWAY FEATURES		AVIATION FEATURES	
INTERSTATE	CONCRETE	COMMERCIAL AIRPORT	GENERAL AIRPORT
US HIGHWAY	BITUMINOUS	AIRSTRIP	SEAPLANE
MN HIGHWAY	GRAVEL	AIRPORT RUNWAY	BOUNDARY FEATURES
COUNTY STATE AID HIGHWAY	DIRT/UNIMPROVED	TRAIL	TRIBAL LAND
COUNTY ROAD	OTHER	STATE OF MINNESOTA	COUNTY
TOWNSHIP ROAD	UNKNOWN	MUNICIPALITY	UNORGANIZED TERRITORY
UNORGANIZED TERRITORY ROAD		FEDERAL ADJUSTED URBAN AREA (2014)	CIVIL TOWNSHIP
OTHER ROADS		CONGRESSIONAL TOWNSHIP	SECTION
Municipal Private National Monument State Forest		MILITARY	VOYAGEURS NATIONAL PARK
Nature Service National Park National Wildlife State Game		BOUNDARY WATERS CANOE AREA WILDERNESS	STATE PARK
Museum National Forest State Park Preserve		REGIONAL PARK	NATIONAL FOREST
		NATIONAL AND STATE FOREST	STATE FOREST
		NATIONAL TRAIL	WILDLIFE REFUGUE AREA
		WILDLIFE MANAGEMENT AREA	HYDROLOGIC FEATURES
		RIVER OR STREAM (PERENNIAL)	LAKE, POND OR RESERVOIR
		STREAM (INTERMITTENT)	DRAINAGE DITCH
		WETLAND	ISLAND OR LAND
		REGIONAL WATERSHED	



Population (U.S. Census 2010): 300



To request information from this document in an alternative format, call 651-366-4718 or 1-800-657-3774 (Greater Minnesota); 711 or 1-800-627-3529 (Minnesota Relay). You may also send an e-mail to ADArequest.dot@state.mn.us. (Please request at least one week in advance.)