

TOWNSHIP OF ROLLINGSTONE

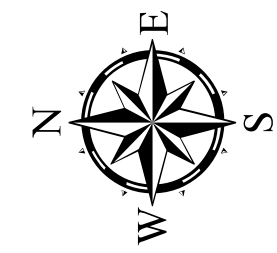
PREPARED BY THE
MINNESOTA DEPARTMENT OF TRANSPORTATION
OFFICE OF TRANSPORTATION SYSTEM MANAGEMENT

IN COOPERATION WITH
U.S. DEPARTMENT OF TRANSPORTATION
FEDERAL HIGHWAY ADMINISTRATION



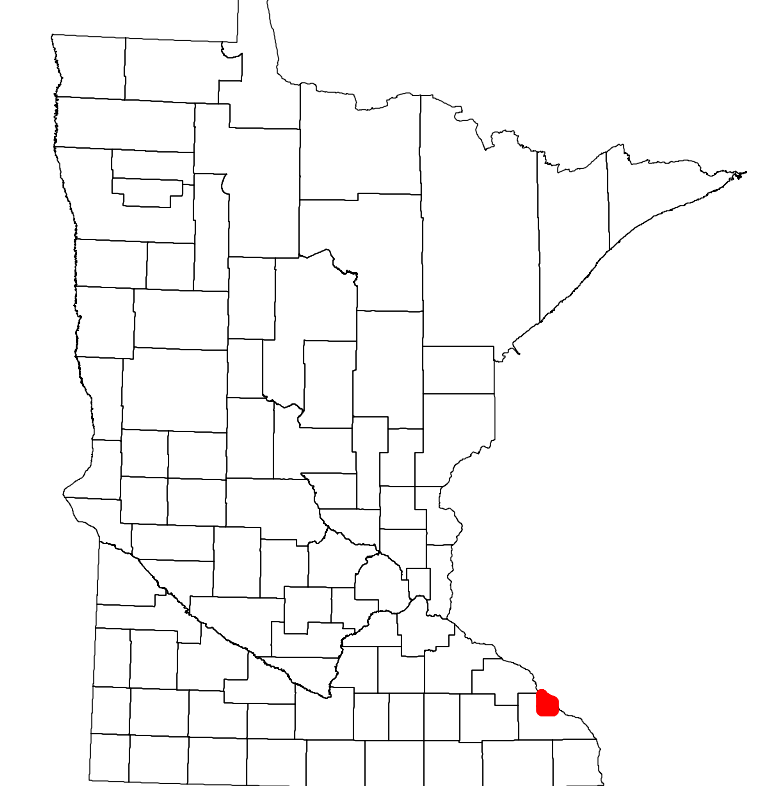
2022

Projection:
Transverse Mercator
NAD 1986
UTM Zone 15

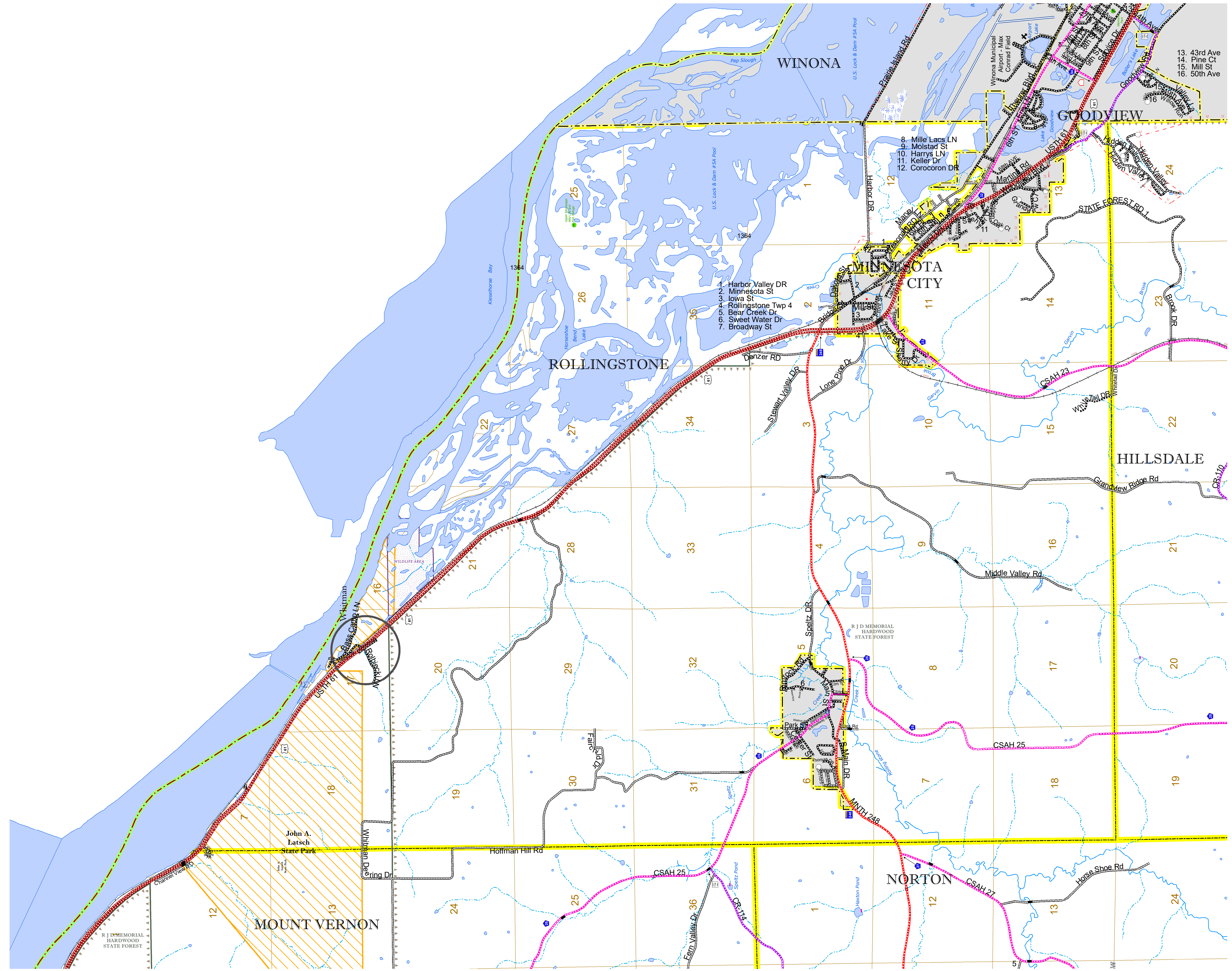


North American Datum
of 1986

ROAD AND ROADWAY FEATURES		RAILROAD AND RAILWAY FEATURES		AVIATION FEATURES		BOUNDARY FEATURES	
INTERSTATE	CONCRETE	EMPIRE BUILDER STATION (AMTRAK)	COMMERCIAL AIRPORT	TRIBAL LAND	STATE OF MINNESOTA	STATE CAPITAL	SECTION
US HIGHWAY	BITUMINOUS	NORTHSTAR STATION (COMPUTER)	GENERAL AIRPORT	STATE OF MINNESOTA	COUNTY	COUNTY SEAT	MILITARY
MN HIGHWAY	GRAVEL	LIGHT RAIL	AIRSTRIP	COUNTY	MUNICIPALITY	CITY CENTER	VOYAGEURS NATIONAL PARK
COUNTY STATE AID HIGHWAY	DIRT/UNIMPROVED	BLUE LINE	SEAPLANE	COUNTY	MUNICIPALITY	CITY CENTER	BOUNDARY WATERS CANOE AREA WILDERNESS
COUNTY ROAD	OTHER	GREEN LINE	AIRPORT RUNWAY	COUNTY	MUNICIPALITY	CITY CENTER	STATE PARK
TOWNSHIP ROAD	UNKNOWN	LONG BRIDGE (200' OR GREATER SPAN)		COUNTY	MUNICIPALITY	CITY CENTER	REGIONAL PARK
UNORGANIZED TERRITORY ROAD		MAJOR BRIDGE (20' TO 200' SPAN)		COUNTY	MUNICIPALITY	CITY CENTER	NATIONAL FOREST
OTHER ROADS		MINOR BRIDGE (5' TO 20' SPAN)		COUNTY	MUNICIPALITY	CITY CENTER	NATIONAL AND STATE FOREST
Municipal		DAM		COUNTY	MUNICIPALITY	CITY CENTER	STATE FOREST
Private		LOCK AND DAM		COUNTY	MUNICIPALITY	CITY CENTER	NATIONAL TRAIL
National Monument				COUNTY	MUNICIPALITY	CITY CENTER	WILDLIFE REFUGUE AREA
State Forest				COUNTY	MUNICIPALITY	CITY CENTER	WILDLIFE MANAGEMENT AREA
State Game				COUNTY	MUNICIPALITY	CITY CENTER	HYDROLOGIC FEATURES
State Park				COUNTY	MUNICIPALITY	CITY CENTER	RIVER OR STREAM (PERMANENT)
Preserve				COUNTY	MUNICIPALITY	CITY CENTER	LAKE, POND OR RESERVOIR
				COUNTY	MUNICIPALITY	CITY CENTER	STREAM (INTERMITTENT)
				COUNTY	MUNICIPALITY	CITY CENTER	DRAINAGE DITCH
				COUNTY	MUNICIPALITY	CITY CENTER	WETLAND
				COUNTY	MUNICIPALITY	CITY CENTER	ISLAND OR LAND
				COUNTY	MUNICIPALITY	CITY CENTER	REGIONAL WATERSHED



Population (U.S. Census 2010): 701



To request information from this document in an alternative format, call 651-366-4718 or 1-800-657-3774 (Greater Minnesota); 711 or 1-800-627-3529 (Minnesota Relay). You may also send an e-mail to ADAREquest.dot@state.mn.us. (Please request at least one week in advance.)