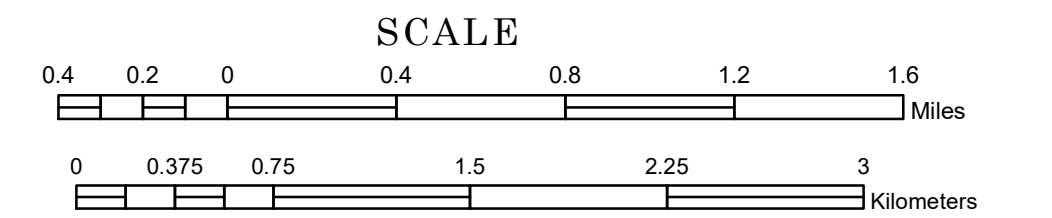


TOWNSHIP OF ROCKFORD

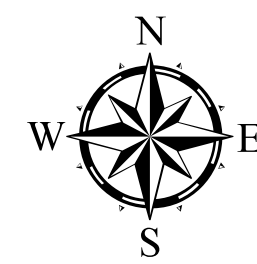
PREPARED BY THE
MINNESOTA DEPARTMENT OF TRANSPORTATION
OFFICE OF TRANSPORTATION SYSTEM MANAGEMENT

IN COOPERATION WITH
U.S. DEPARTMENT OF TRANSPORTATION
FEDERAL HIGHWAY ADMINISTRATION



1 in = 2,400 ft

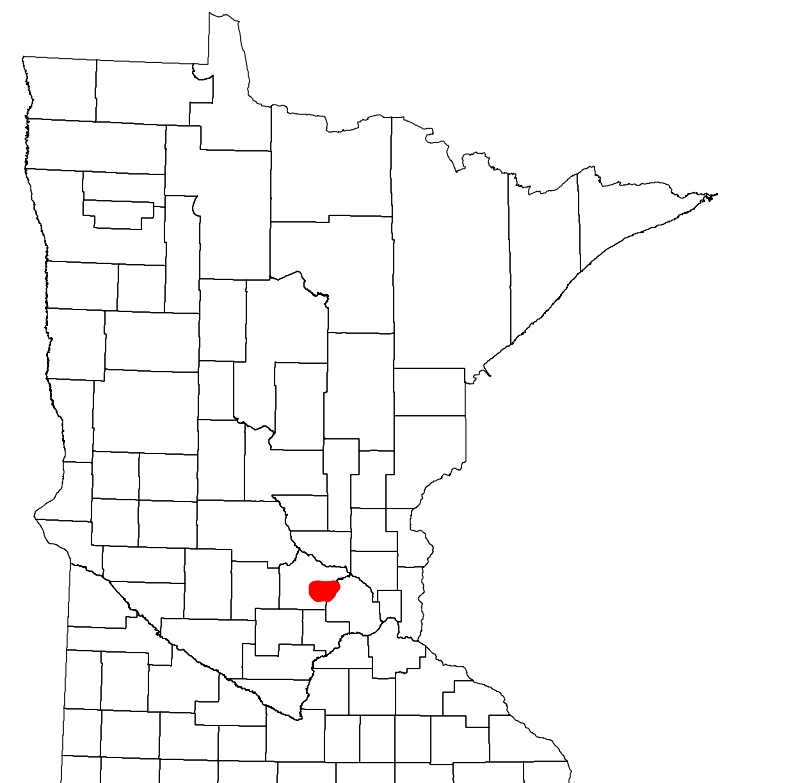
2022



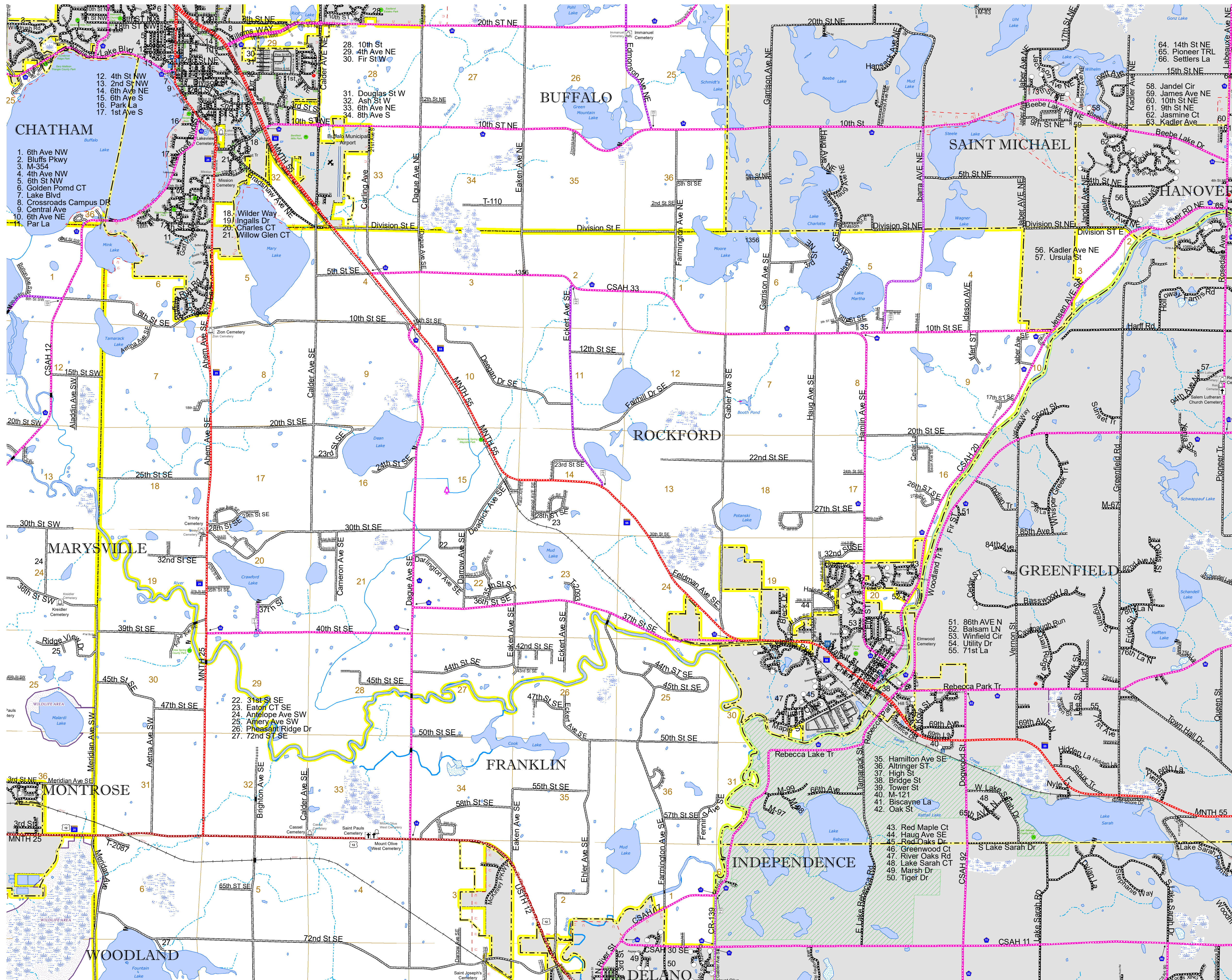
Projection:
Transverse Mercator
NAD 1986
UTM Zone 15

North American Datum
of 1986

ROAD AND ROADWAY FEATURES		BOUNDARY FEATURES	
INTERSTATE		CONCRETE	
US HIGHWAY		BITUMINOUS	
MN HIGHWAY		GRAVEL	
COUNTY STATE AID HIGHWAY		DIRT/UNIMPROVED	
COUNTY ROAD		OTHER	
TOWNSHIP ROAD		UNKNOWN	
UNORGANIZED TERRITORY ROAD		RAMP OR CONNECTOR	
OTHER ROADS		INTERSTATE EXIT	
Municipal		GREAT RIVER ROAD	
Private		RAILROAD AND RAILWAY FEATURES	
National Monument		COMMERCIAL AIRPORT	
State Forest		GENERAL AIRPORT	
National Park		AIRSTRIP	
National Wildlife Refuge		SEAPLANE	
State Park		AIRPORT RUNWAY	
Preserve		TRAIL, LAND	
RAILROAD AND RAILWAY FEATURES		STATE OF MINNESOTA	
EMPIRE BUILDER STATION (AMTRAK)		COUNTY	
NORTHSTAR STATION (COMPUTER)		MUNICIPALITY	
LIGHT RAIL		UNORGANIZED TERRITORY	
BLUE LINE		FEDERAL ADJUSTED URBAN AREA (2014)	
GREEN LINE		CIVIL TOWNSHIP	
INFRASTRUCTURE FEATURES		CONGRESSIONAL TOWNSHIP	
LONG BRIDGE (200' OR GREATER SPAN)		SECTION	
MAJOR BRIDGE (20' TO 200' SPAN)		MILITARY	
MINOR BRIDGE (5' TO 20' SPAN)		VOYAGEURS NATIONAL PARK	
DAM		BOUNDARY WATERS CANOE AREA WILDERNESS	
LOCK AND DAM		STATE PARK	
CITY CENTERS		REGIONAL PARK	
STATE CAPITAL		NATIONAL FOREST	
COUNTY SEAT		NATIONAL AND STATE FOREST	
CITY CENTER		STATE FOREST	
UNINCORPORATED COMMUNITY		NATIONAL TRAIL	
PUBLIC SERVICE FEATURES		WILDLIFE REFUGE AREA	
MNDOT OFFICE		WILDLIFE MANAGEMENT AREA	
MNDOT TRUCK STATION		RIVER OR STREAM (PERMANENT)	
HIGHWAY PATROL DISTRICT OFFICE		LAKE, POND OR RESERVOIR	
STATE TRAVEL INFORMATION CENTER		STREAM (INTERMITTENT)	
REST AREA (FULL SERVICE)		DRAINAGE DITCH	
REST AREA (VAULT TOILET)		WETLAND	
WAYSIDE (VAULT OR PITY TOILET)		ISLAND OR LAND	
PARK AND RIDE LOT		REGIONAL WATERSHED	
PORT OF ENTRY			
PUBLIC ACCESS POINT			
MN STATE COLLEGE AND UNIVERSITY SYSTEM (MNSCU)			
UNIVERSITY OF MN SYSTEM			
FAIRGROUNDS			
CULTURAL FEATURES			
STATE HISTORICAL MARKER			
HISTORIC DISTRICT			
HISTORIC SITE			
MONUMENT			



Population (U.S. Census 2010): 3194



To request information from this document in an alternative format, call 651-366-4718 or 1-800-657-3774 (Greater Minnesota); 711 or 1-800-627-3529 (Minnesota Relay). You may also send an e-mail to ADARquest.dot@state.mn.us. (Please request at least one week in advance.)