

Elevation:
491 Meters
(1611 Feet)

Meters →

SW

NE

Rock River Meander Belt with Multiple Facies Not Shown

Rock River

PS-1

PS-2

PS-3

PS-4

PS-5

PS-6

Alluvium

Reworked Till

Glaciofluvial Deposits

Till

Fining Upwards Sequence

Auger Sample

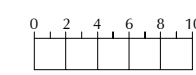
Auger Sample

Auger Sample

Auger Sample

Auger Sample

Centimeters



TEXTURE

- 1 Clay or Sandy Clay
- 2 Silty Clay
- 3 Sandy Clay Loam, Silty Clay Loam, or Clay Loam
- 4 Silt Loam, Silt, Loam, or Peat
- 5 Sandy Loam
- 6 Loamy Sand
- 7 Very Fine to Fine Sand
- 8 Medium Sand
- 9 Coarse Sand
- 10 Gravel

LEGEND

- Solum
- Peat/Organic Soil
- Textures (See Chart at Left)
- Break for Graphic Representation
- Shells
- Plant Matter for C-14
- No Recovery

MINNESOTA DEPARTMENT OF TRANSPORTATION

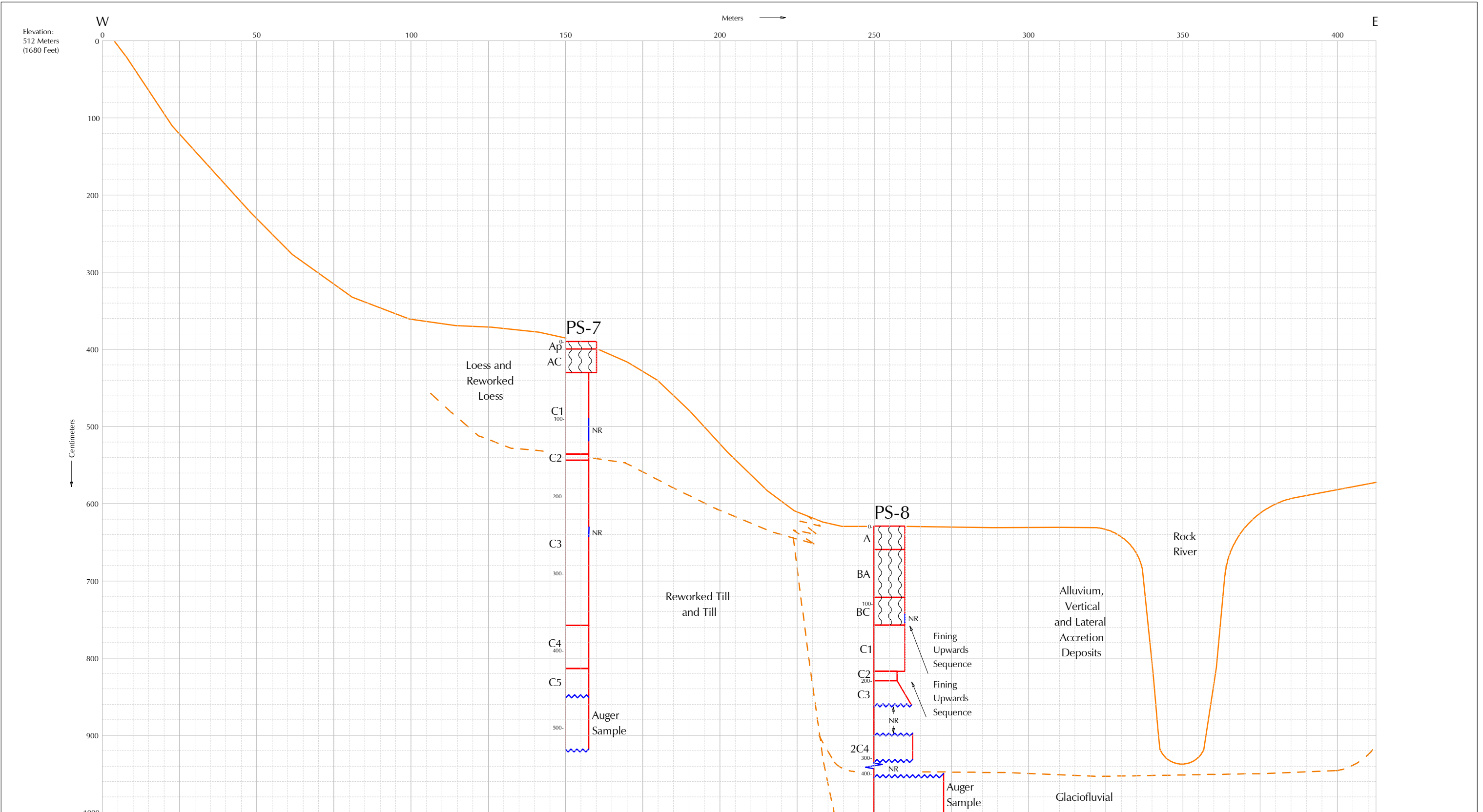
FIGURE E-60
BLEYENBERG PROPERTY
SECTION 4, T105N, R44W

DEPARTMENT OF TRANSPORTATION
UNITED STATES OF AMERICA

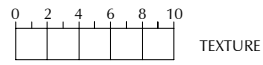
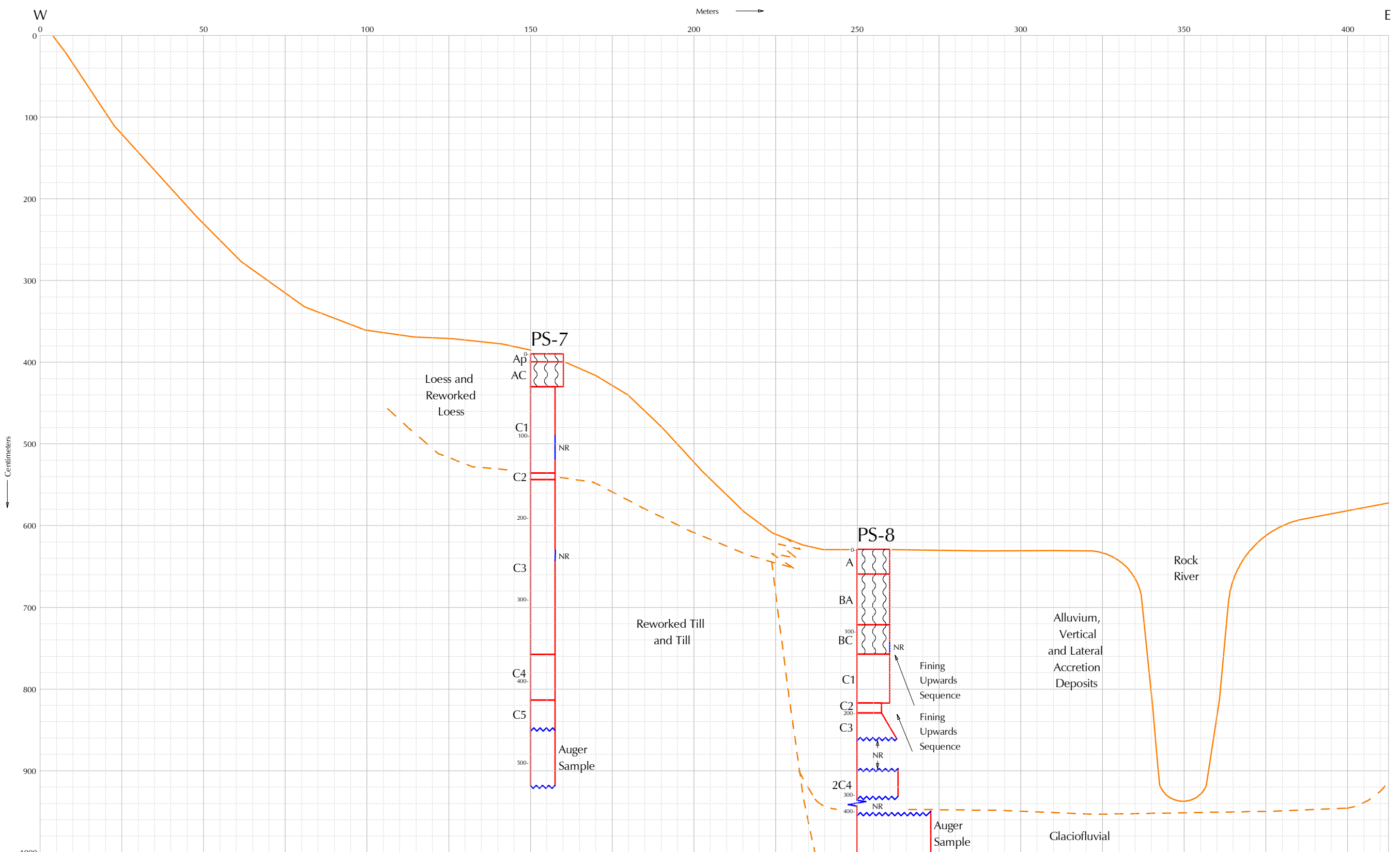
Scale: AS SHOWN

Date: 6/97

By: KEB



Elevation:
512 Meters
(1680 Feet)



- 1 Clay or Sandy Clay
- 2 Silty Clay
- 3 Sandy Clay Loam, Silty Clay Loam, or Clay Loam
- 4 Silt Loam, Silt, Loam, or Peat
- 5 Sandy Loam
- 6 Loamy Sand
- 7 Very Fine to Fine Sand
- 8 Medium Sand
- 9 Coarse Sand
- 10 Gravel

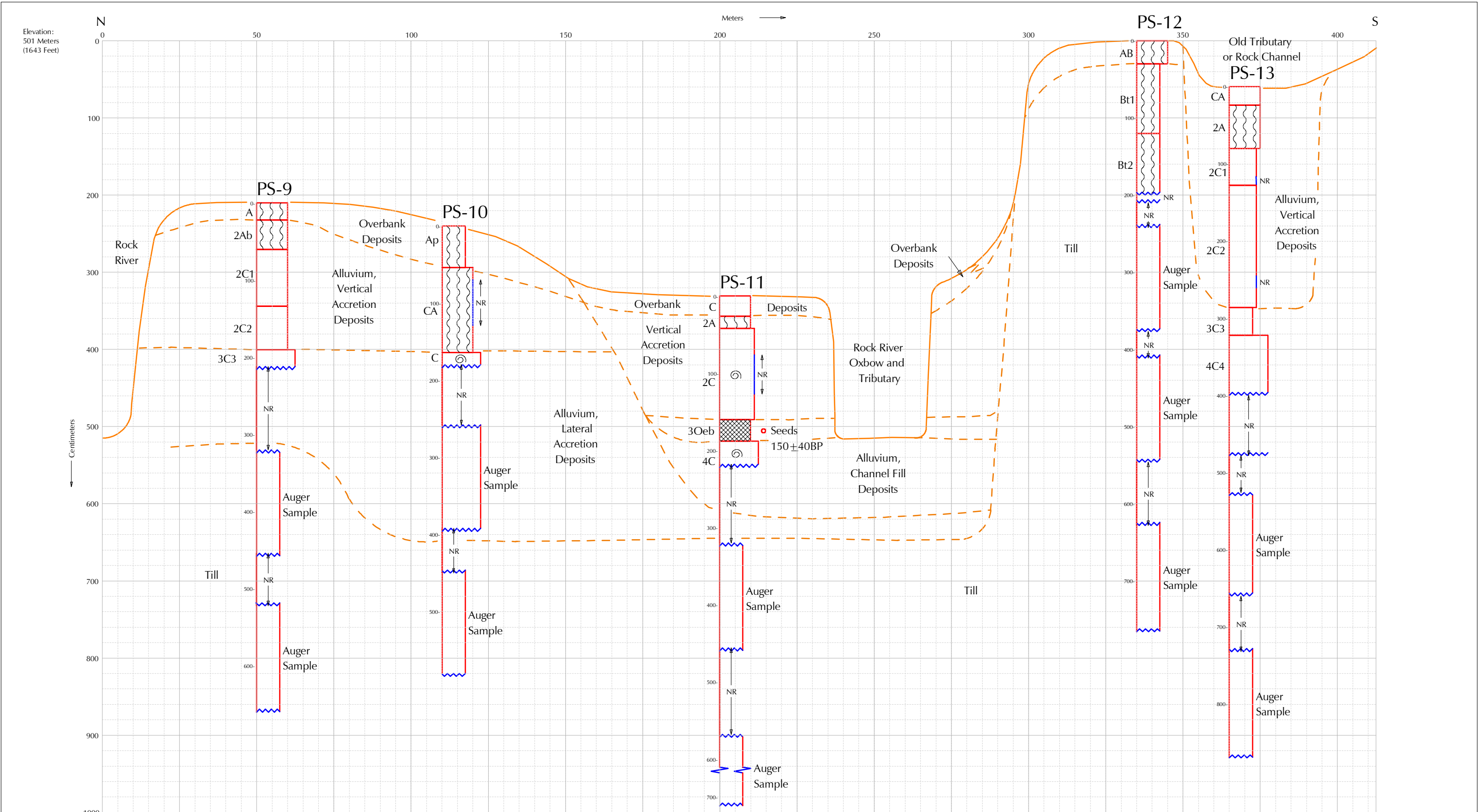
LEGEND

| | | |
|-----------------------|-------------------------------------|---------------------------------|
| Solum | Peat/ Organic Soil | Textures (See Chart at Left) |
| NR No Recovery | Break for Graphic Representation | Shells |
| Plant Matter for C-14 | | |

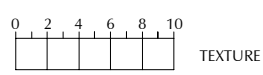
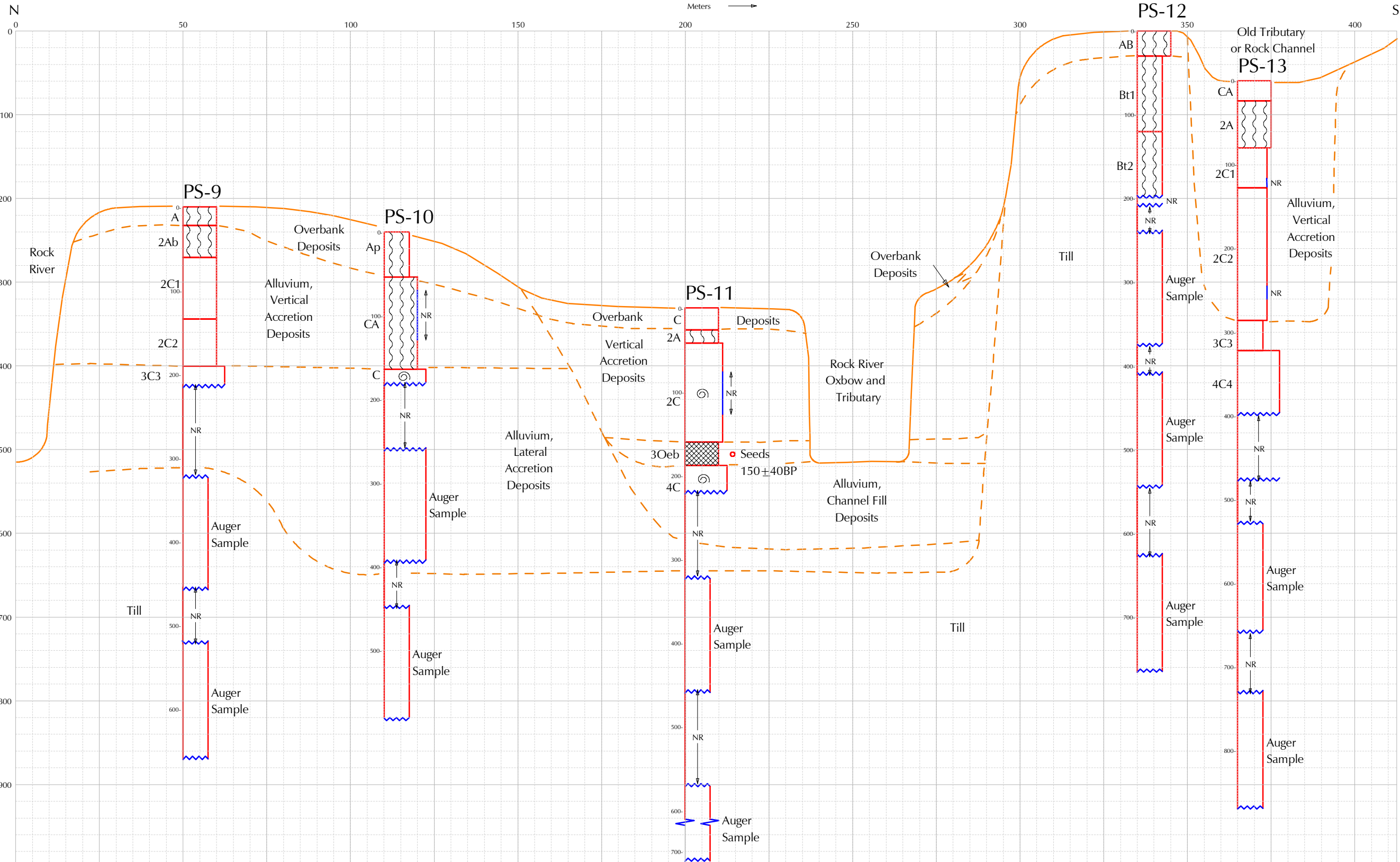
MINNESOTA DEPARTMENT OF TRANSPORTATION

FIGURE E-61
FENNICLE PROPERTY
SECTION 6, T106N, R44W

| | | |
|--|-----------------|---------|
| DEPARTMENT OF TRANSPORTATION UNITED STATES OF AMERICA | Scale: AS SHOWN | |
| | Date: 6/97 | By: KEB |



Elevation:
501 Meters
(1643 Feet)



- 1 Clay or Sandy Clay
- 2 Silty Clay
- 3 Sandy Clay Loam, Silty Clay Loam, or Clay Loam
- 4 Silt Loam, Silt, Loam, or Peat
- 5 Sandy Loam
- 6 Loamy Sand
- 7 Very Fine to Fine Sand
- 8 Medium Sand
- 9 Coarse Sand
- 10 Gravel

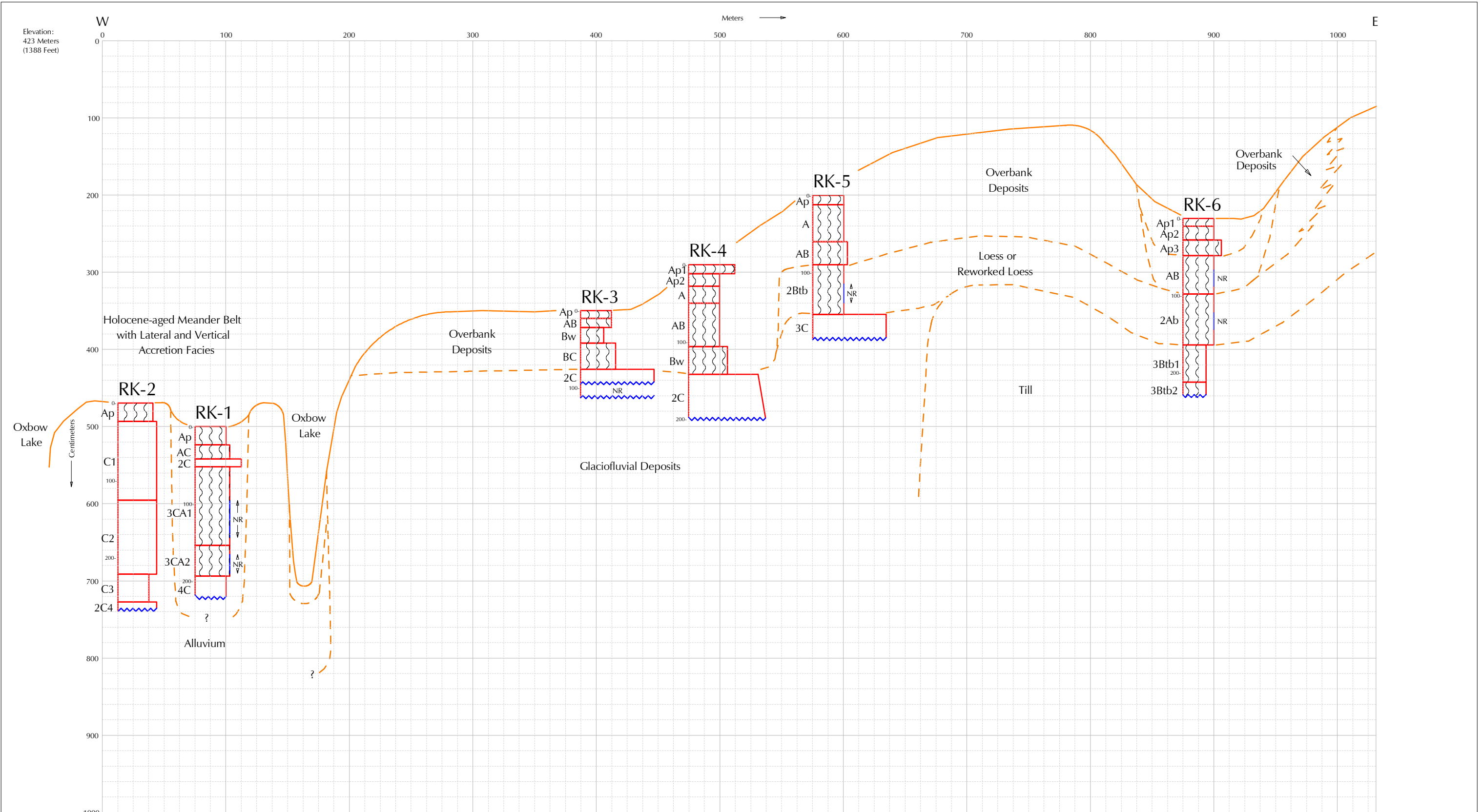
LEGEND

| | | | | | |
|----|-------------|--|--------------------------|--|-------------------------------------|
| | Solum | | Peat/ Organic Soil | | Textures (See Chart at Left) |
| NR | No Recovery | | Plant Matter for C-14 | | Break for Graphic Representation |
| | | | Shells | | |

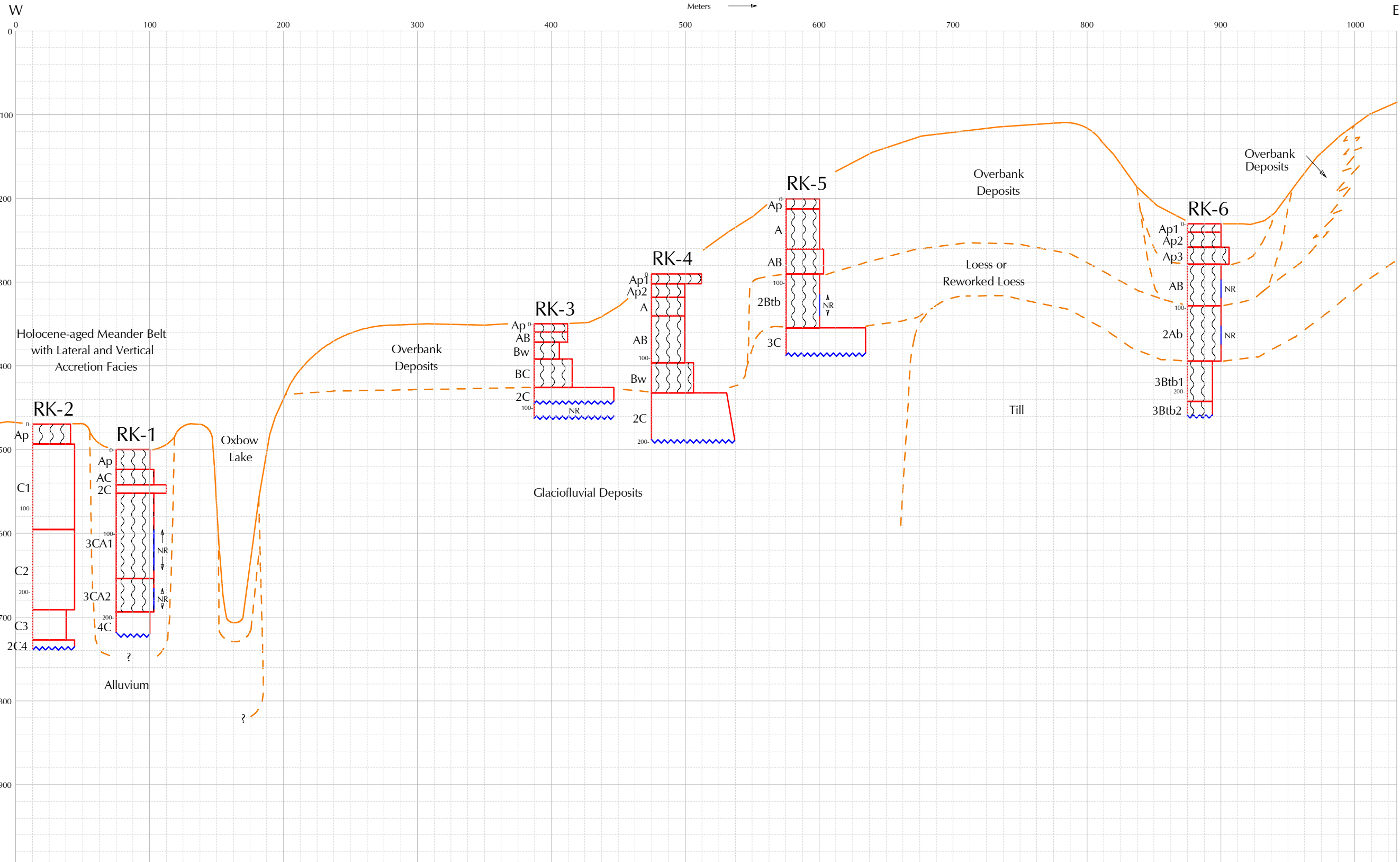
MINNESOTA DEPARTMENT OF TRANSPORTATION

FIGURE E-62
VREEMAN PROPERTY
SECTION 19, T106N, R44W

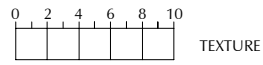
| | | |
|--|-----------------|------------|
| DEPARTMENT OF TRANSPORTATION UNITED STATES OF AMERICA | Scale: AS SHOWN | Date: 6/97 |
| | | By: KEB |



Elevation:
423 Meters
(1388 Feet)



- | | |
|----|--|
| 1 | Clay or Sandy Clay |
| 2 | Silty Clay |
| 3 | Sandy Clay Loam, Silty Clay Loam, or Clay Loam |
| 4 | Silt Loam, Silt, Loam, or Peat |
| 5 | Sandy Loam |
| 6 | Loamy Sand |
| 7 | Very Fine to Fine Sand |
| 8 | Medium Sand |
| 9 | Coarse Sand |
| 10 | Gravel |

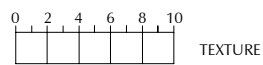
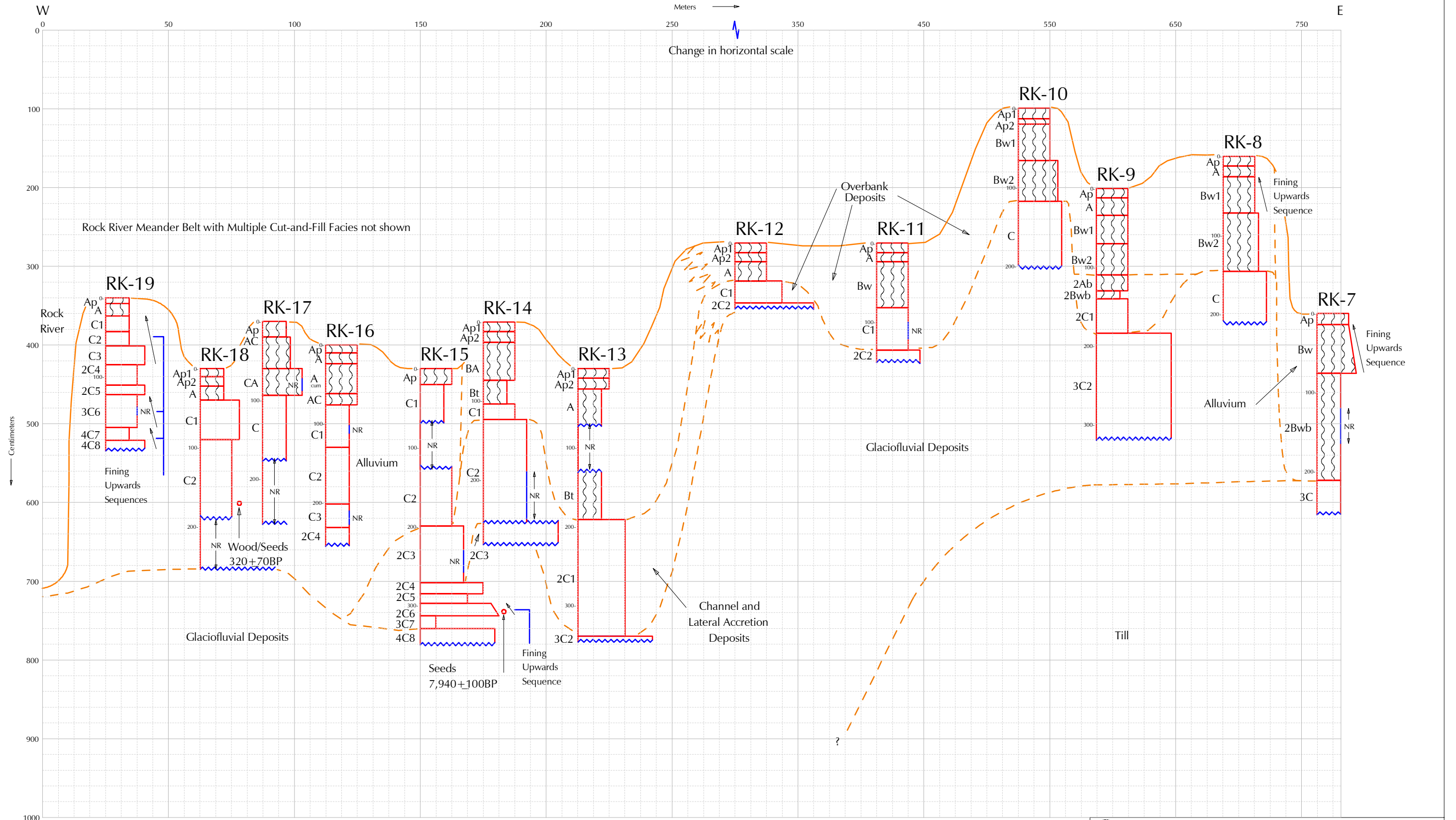


LEGEND

| | | | | | |
|----|-----------------------|--|-------------------------------------|--|---------------------------------|
| | Solum | | Peat/ Organic Soil | | Textures (See Chart at Left) |
| NR | No Recovery | | Break for Graphic Representation | | Shells |
| | Plant Matter for C-14 | | | | |

| | | |
|---|-------------------------------|---------|
| MINNESOTA DEPARTMENT OF TRANSPORTATION | | |
| FIGURE E-63 BOEVE PROPERTY SECTION 25, T101N, R45W | | |
| DEPARTMENT OF TRANSPORTATION UNITED STATES OF AMERICA | Scale: AS SHOWN Date: 6/97 | By: KEB |

Elevation:
428 Meters
(1404 Feet)



- 1 Clay or Sandy Clay
- 2 Silty Clay
- 3 Sandy Clay Loam, Silty Clay Loam, or Clay Loam
- 4 Silt Loam, Silt, Loam, or Peat
- 5 Sandy Loam
- 6 Loamy Sand
- 7 Very Fine to Fine Sand
- 8 Medium Sand
- 9 Coarse Sand
- 10 Gravel

| LEGEND | |
|--------|----------------------------------|
| | Solum |
| | No Recovery |
| | Plant Matter for C-14 |
| | Peat/Organic Soil |
| | Textures (See Chart at Left) |
| | Break for Graphic Representation |
| | Shells |

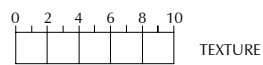
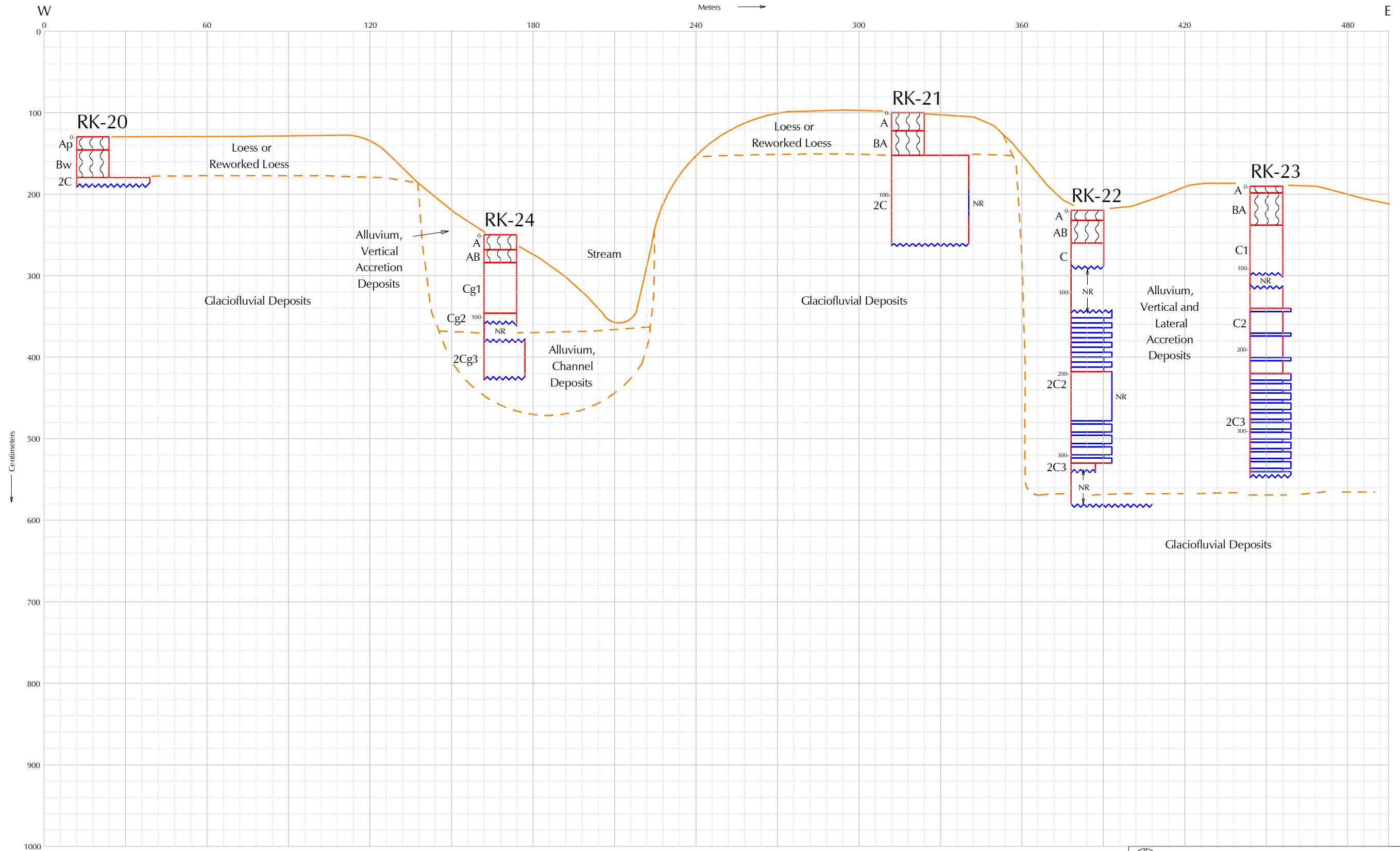
MINNESOTA DEPARTMENT OF TRANSPORTATION

FIGURE E-64
KRACHT PROPERTY
SECTION 13, T101N, R45W

DEPARTMENT OF TRANSPORTATION
UNITED STATES OF AMERICA

Scale: AS SHOWN
Date: 6/97
By: KEB

Elevation:
447 Meters
(1467 Feet)



- 1 Clay or Sandy Clay
- 2 Silty Clay
- 3 Sandy Clay Loam, Silty Clay Loam, or Clay Loam
- 4 Silt Loam, Silt, Loam, or Peat
- 5 Sandy Loam
- 6 Loamy Sand
- 7 Very Fine to Fine Sand
- 8 Medium Sand
- 9 Coarse Sand
- 10 Gravel

LEGEND

- Solum
- Peat/Organic Soil
- Textures (See Chart at Left)
- Plant Matter for C-14
- Break for Graphic Representation
- Shells
- No Recovery

MINNESOTA DEPARTMENT OF TRANSPORTATION

FIGURE E-65

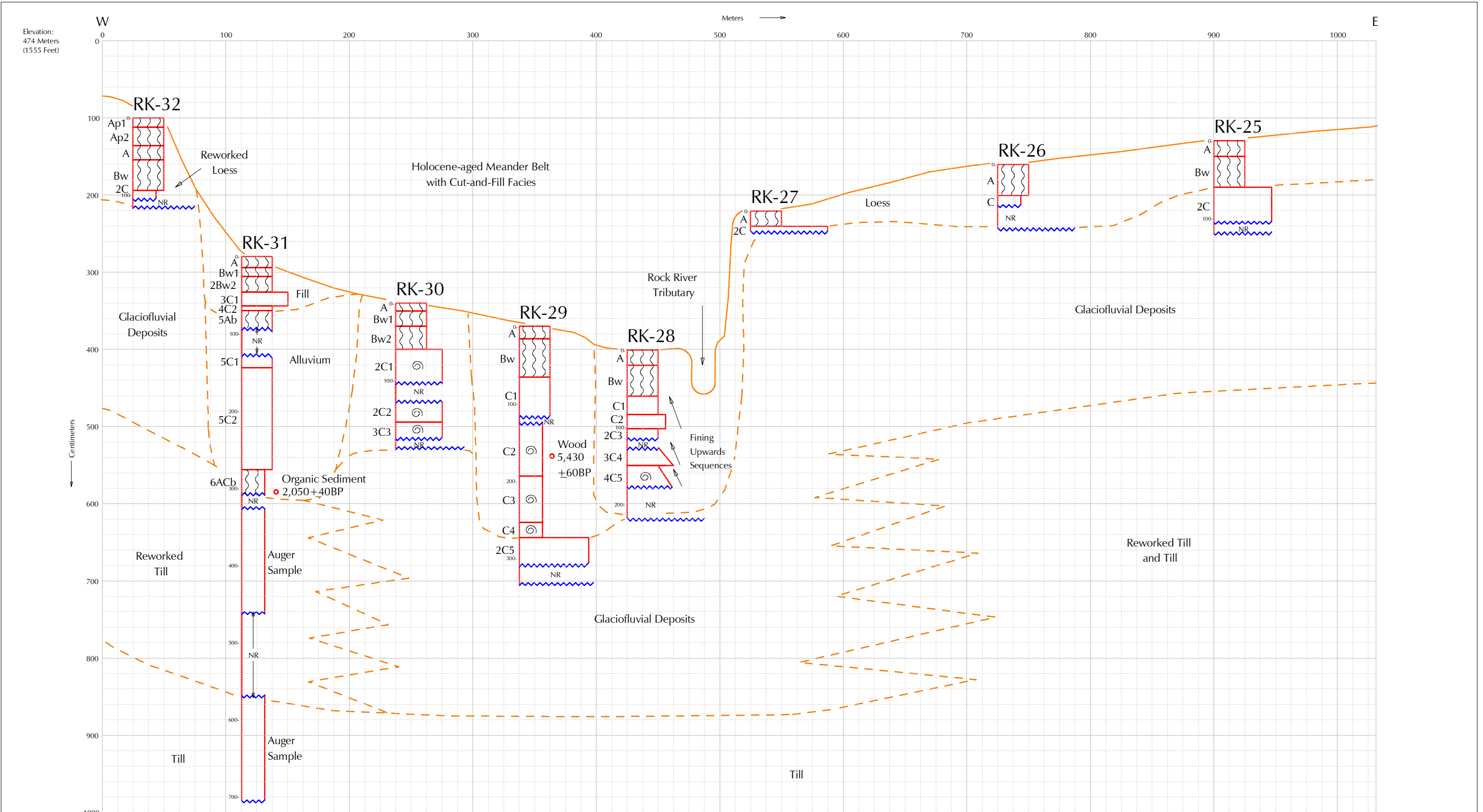
VIENNA TOWNSHIP ROAD
SECTION 30, T103N, R44W

DEPARTMENT OF TRANSPORTATION
UNITED STATES OF AMERICA

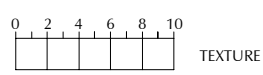
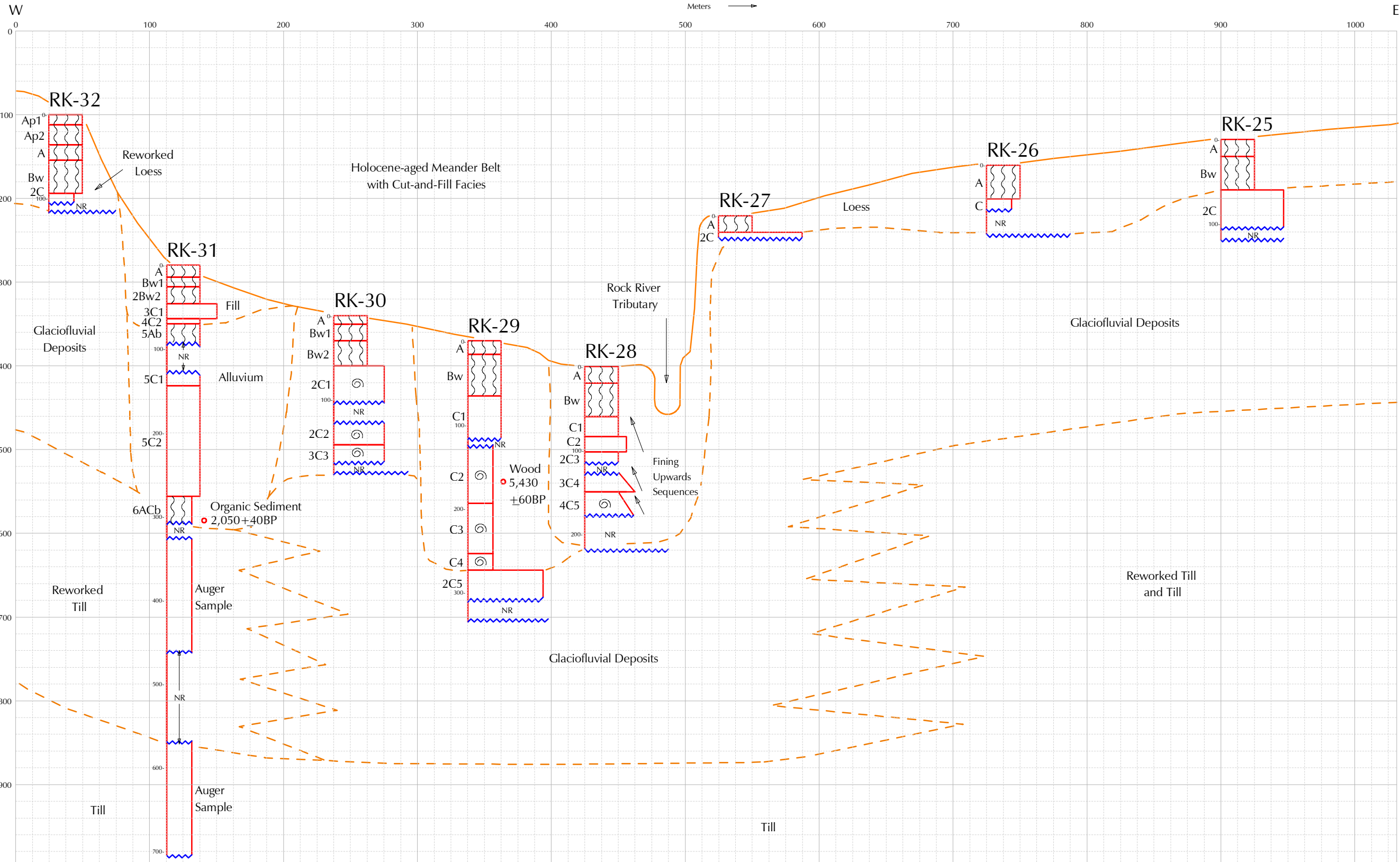
Scale: AS SHOWN

Date: 6/97

By: KEB



Elevation:
474 Meters
(1555 Feet)



- 1 Clay or Silty Clay
- 2 Silty Clay
- 3 Sandy Clay Loam, Silty Clay Loam, or Clay Loam
- 4 Silt Loam, Silt, Loam, or Peat
- 5 Sandy Loam
- 6 Loamy Sand
- 7 Very Fine to Fine Sand
- 8 Medium Sand
- 9 Coarse Sand
- 10 Gravel

LEGEND

| | | | |
|--|-----------------------|--|-------------------------------------|
| | Solum | | Peat/ Organic Soil |
| | No Recovery | | Textures (See Chart at Left) |
| | Plant Matter for C-14 | | Break for Graphic Representation |
| | | | Shells |

MINNESOTA DEPARTMENT OF TRANSPORTATION

FIGURE E-66
COUNTY ROAD 21 RIGHT-OF-WAY
SECTION 18, T104N, R44W

| | | |
|--|-----------------|---------|
| DEPARTMENT OF TRANSPORTATION UNITED STATES OF AMERICA | Scale: AS SHOWN | |
| | Date: 6/97 | By: KEB |