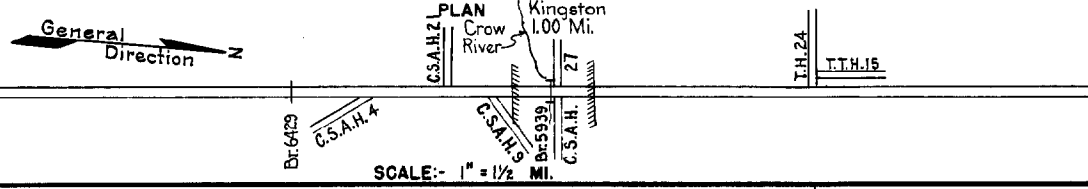


PREPARED BY
HIGHWAY PLANNING SURVEY
IN COOPERATION WITH
U.S. PUBLIC ROADS ADMINISTRATION

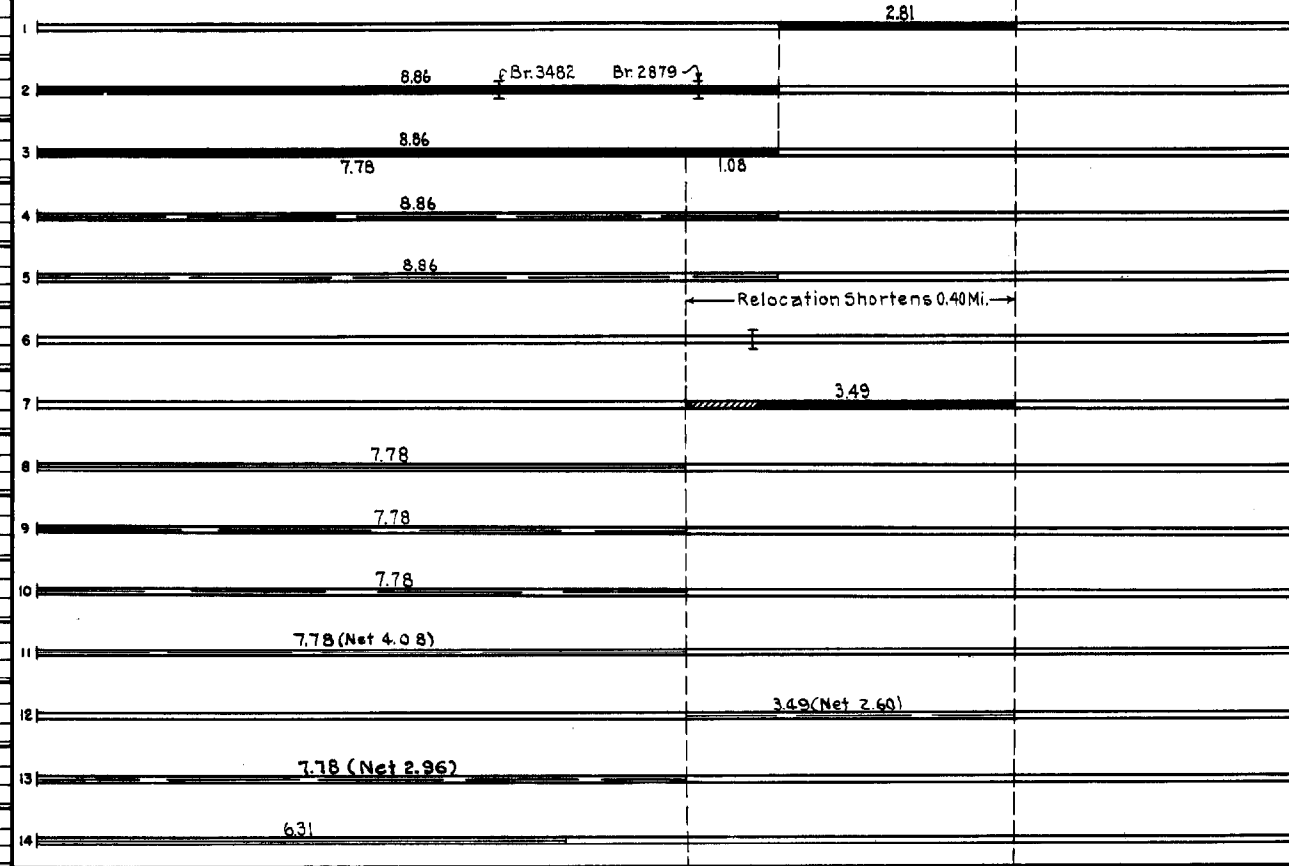
STATE OF MINNESOTA
DEPARTMENT OF HIGHWAYS
ROAD LIFE STUDIES
CONSTRUCTION PROJECT LOG RECORD

CONTROL SECTION 4707
TRUNK HIGHWAY 15
COUNTY Meeker
DISTRICT 8A

LIMITS: W. Jct. T.H. 12 - Jct. T.H. 24



YEAR BUILT	PROJECT N ^o	DESCRIPTION			CODE N ^o
		TYPE	WIDTH	THICKNESS	
		Gravel	26'	2"	No Record of Constr. Added in 1934.
		Gravel	24'	1"	No Record of Constr. Added in 1934. Br. 3482 & 2879 30' B.S. & 139' H.T. & B.S.
1935		Oil Tr. Gravel	18'	3/4"	10520-4953 Gal./Mi. Maint. Dept.
M 1940	A.F.E. 25	Spot Treat. Bit. Surf. Repair			Bit. 1057 Gal./Mi. Maint. Dept.
M 1941	A.F.E. 22	Spot Treat. Bit. Surf. Repair			SC-3, 2580 Gal./Mi. Maint. Dept.
C 1941	4707-03	Br. 5939	30'		Replaces Old Br. 2879 112' C.D.G.
C 1942	4707-02	Grading Stab. Gravel	34%		1885 C.Y./Mile.
M 1943	A.F.E. 4	Bit. Surf. Repair			MC 1195 Gal./Mi. Grav. 57 C.Y./Mi. Maint. Dept.
M 1944	A.F.E. 4	Spot Treat. Bit. Surf. Repair			Oil 3254 Gal./Mi. Grav. 236 C.Y./Mi. Maint. Div.
M 1945	A.F.E. 4	Spot Treat. Bit. Surf. Repair	24'		Oil 4780 Gal./Mi. Grav. 215 C.Y./Mi. Maint. Div.
M 1946	A.F.E. 4	Spot Treat. Bit. Surf. Repair	24'		SC-3, 25849 Gal. Agg. 1276 C.Y.
M 1946	A.F.E. 6	Grav. Resurfacing (Spots)	24'		696 C.Y.
M 1947	A.F.E. 4	Spot Treat. Bit. Surf. Repair	24'		SC-3, 19163 Gal. Agg. 1679 Tons
M 1948	A.F.E. 4	Bit. Surf. Repair	22'		SC-3, 39939 Gal. Agg. 3528 Tons



YEARS		TOTAL MILES	UNINCORPORATED		INCORPORATED		RURAL		URBAN	
FROM	TO		ROWY. MI.	BR. MI.	ROWY. MI.	BR. MI.	ROWY. MI.	BR. MI.	ROWY. MI.	BR. MI.
1934	1941	11.67	11.17	0.03	0.47	0.00	11.64	0.03	0.00	0.00
1942	1947	11.27	10.77	0.03	0.47	0.00	11.24	0.03	0.00	0.00
1948	1961	10.95	10.95	0.02	0.00	0.00	10.95	0.02	0.00	0.00
1962		10.95	9.95	0.00	0.98	0.02	10.93	0.02	0.00	0.00

REMARKS: Layout is to scale as of 1934. Plan revised for 1942 relocation & 1948 relocation.

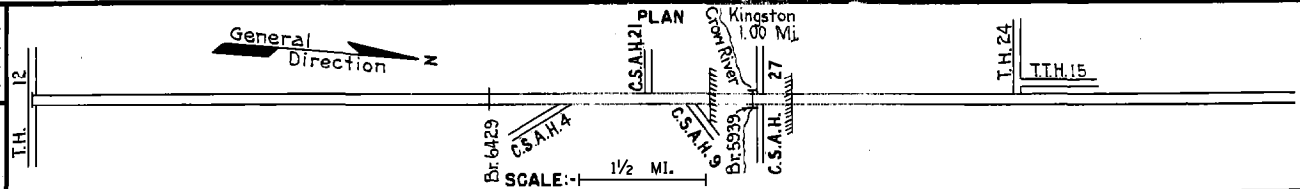
PREPARED BY
HIGHWAY PLANNING SURVEY
IN COOPERATION WITH
U.S. PUBLIC ROADS ADMINISTRATION

STATE OF MINNESOTA
DEPARTMENT OF HIGHWAYS
ROAD LIFE STUDIES
CONSTRUCTION PROJECT LOG RECORD

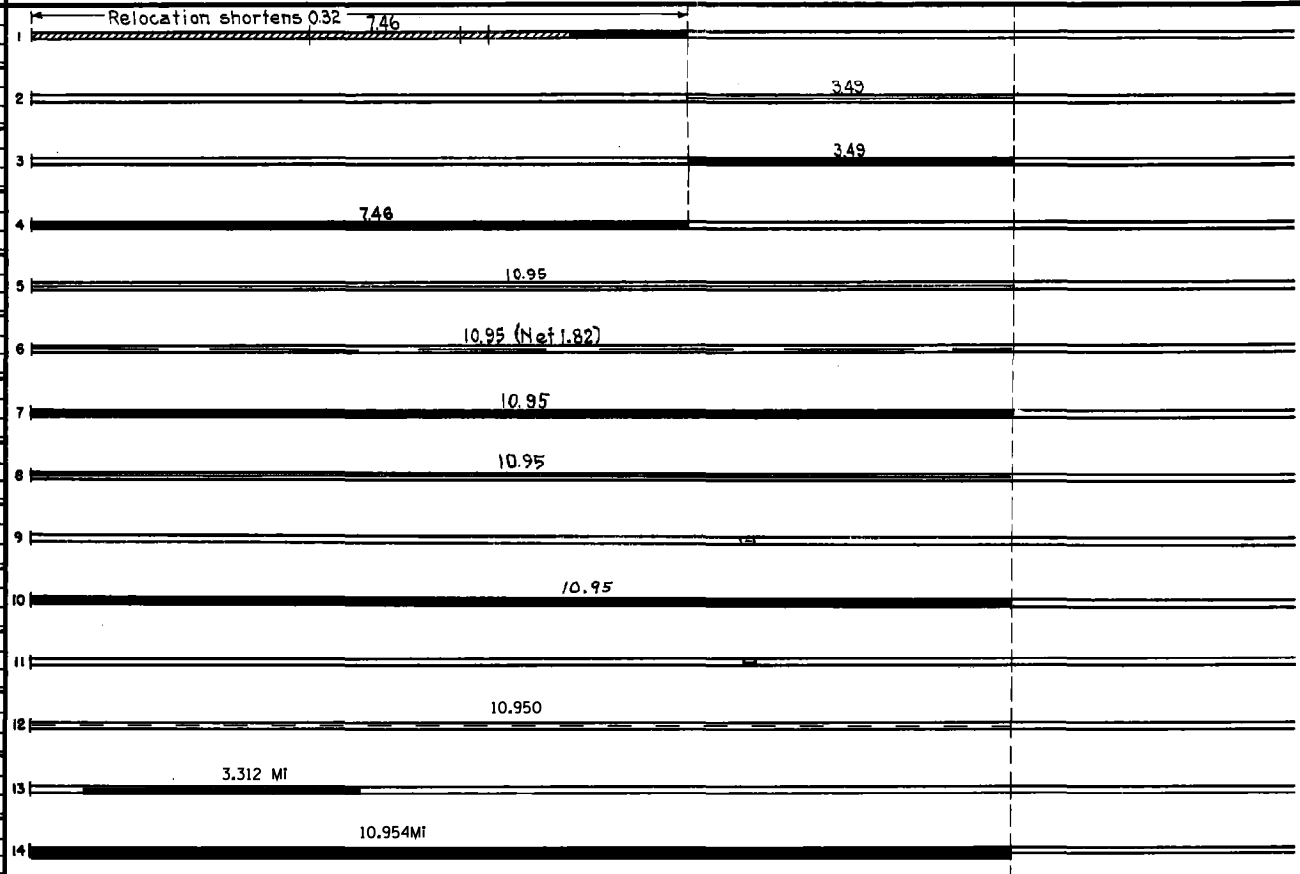
CONTROL SECTION 4707
TRUNK HIGHWAY 15
COUNTY Meeker
DISTRICT 8A

LIMITS: W. Jct. T.H. 12 - Jct. T.H. 24

Ref. Pt. 116+00.420 - 127+00.374



YEAR BUILT	PROJECT N°	DESCRIPTION			CODE N°
		TYPE	WIDTH	THICKNESS	
C	1948 4707-06	Grading	34' 3"		
		Stab. Gravel	24'	2 1/2"	1200 C.Y./Mi. C1010, C1081 & C860
M	1948 A.F.E. 6	Grav. Resurfacing			2310 Tons
C	1949 4707-11	Gravel Base	30'	9"	
		Mixed Bit	26'	1"	
C	1950 4707-12	Gravel Base	32'	4'-18"	
		Mixed Bit	26'	1"	
M	1951 A.F.E. 4	Light Bit Seal	24'		RS-1, 16519 Gal. Agg. 420 C.Y.
M	1958 A.F.E. 604	Spot Treat Bit. Surf. Repair	24'		MC-3, 14412 Gal. Agg. 1225 Tons
C	1959 4707-14	Plant Mix Bit	24'	3"	Subgrade Corrections for a net of 0.35 Mi.
M	1966 C	Light Bit Seal	25'		CRS-1, 24273 Gal. Agg. 829 C.Y.
M	1972 SF	Joint Seal on Br. 5939			52 Lin. ft.
C	1977 4707-20	Bit. SURFACE & TURN LANES	24'	2 1/2"	
M	1982 SF	Deck Repair & Overlay Br-5939		2"	Low Slump Conc. Wearing Course
C	1989 4707-22	Bit. Sealing			
M	1997 M97126	Bit. Overlay	24'	1 1/2"	Spec. 2341
S	2000 4707-25	Bit. Overlay	14'	3"	Spec. 2350



YEARS		TOTAL MILES	UNINCORPORATED		INCORPORATED		RURAL		URBAN	
FROM	TO		RDWY. MI.	BR. MI.	RDWY. MI.	BR. MI.	RDWY. MI.	BR. MI.	RDWY. MI.	BR. MI.

REMARKS: See Sheet No. 1

