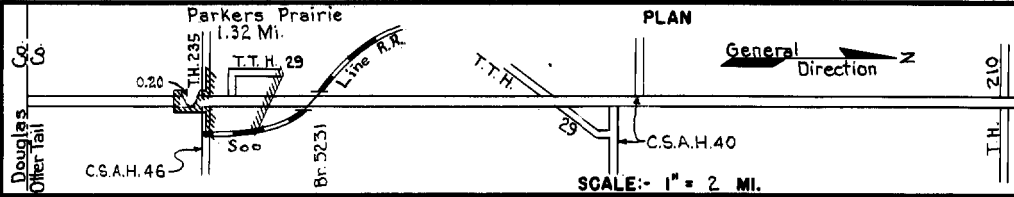


PREPARED BY  
HIGHWAY PLANNING SURVEY  
IN COOPERATION WITH  
U.S. PUBLIC ROADS ADMINISTRATION

STATE OF MINNESOTA  
DEPARTMENT OF HIGHWAYS  
ROAD LIFE STUDIES  
CONSTRUCTION PROJECT LOG RECORD

CONTROL SECTION 5608  
TRUNK HIGHWAY 29  
COUNTY Otter Tail  
DISTRICT 4A-48

LIMITS: S. Co. Line - Jct. T.H. 210



YEAR BUILT	PROJECT N°	DESCRIPTION			CODE N°
		TYPE	WIDTH	THICKNESS	
		Earth	22'		No Record of Constr.
1922		Gravel	22'	2"	Maint. Dept.
1924	29-29-23C	Grading	30'		
1925	29-29-23C	Gravel	24'	1 3/4"	800 C.Y./Mile.
(1)					
1931	29-29-23C	Tar Tr. Gravel	22'	1 1/2"	15,575 Gal./Mile. Maint. Dept.
1932	29-29-24-1	Grading Gravel Br. 5231	32' 24' 28'	1 1/2" 1 1/2"	800 C.Y./Mile. B.S.-U.P.
1935	29-29-24-1	Oil Tr. Gravel	24'	2"	Plant Mix.
M	1942 A.F.E. 26	Spot Treat. Bit. Surf. Repair Subgrade Corr.			Bit. 202 Gal./Mi. Maint. Dept.
M	1944 A.F.E. 5	Bit. Seal Coat	24'		RC-3, 2979 Gal./Mi. Agg. 140 C.Y./Mi. Maint. Div.
C	1949 5608-02	Plant Mix Bit.	24'	1 1/2" added	
C	1950 5608-03	Plant Mix Bit.	24-30'	1 1/2" added	
M	1954 A.F.E. 605	Light Bit. Seal	24'		RS-2, 29349 Gal. Agg. 970 C.Y.
C	1954 5608-07	Stab. Grav. Base Plant Mix Bit.	50-74' 50-74'	3" 2"	
C	1961 5608-10	Grading Base Road Mix Bit. (Base)	53' 42' 26'	5" 5" 1 1/2"	43730 Gal.

1	5.20	13.39	2.62	
2		1.37		3.00
3	3.20			
4	3.20			
5	3.20			
6		12.00		Relocation shortens 1.19
7		12.00		
8	6.43			
9	3.20			
10		12.00		
11	3.28 2.80	11.91		0.01 0.48
12	2.60	11.91		
13		0.49		0.01 0.46
14	2.79			Relocation shortens 0.02

YEARS FROM	TO	TOTAL MILES	UNINCORPORATED		INCORPORATED		RURAL		URBAN	
			RDWY. MI.	BR. MI.	RDWY. MI.	BR. MI.	RDWY. MI.	BR. MI.	RDWY. MI.	BR. MI.
1922	1931	16.39	14.57	0.00	1.82	0.00	15.39	0.00	0.00	0.00
1932	1960	15.20	13.66	0.00	1.54	0.00	15.20	0.00	0.00	0.00
1961	1973	15.18	13.86	0.00	1.32	0.00	15.18	0.00	0.00	0.00
1974		15.22	13.88		1.34		15.22			

REMARKS: Layout is to scale as of 1932.  
(1) This work not done under this project number but lies within the limits of this project.

PREPARED BY  
TRAFFIC AND PLANNING DIVISION  
IN COOPERATION WITH  
U.S. DEPARTMENT OF COMMERCE  
BUREAU OF PUBLIC ROADS

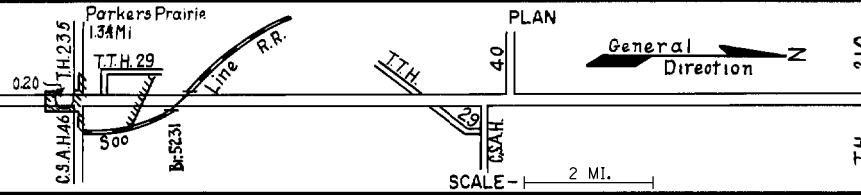
STATE OF MINNESOTA  
DEPARTMENT OF HIGHWAYS  
ROAD LIFE STUDIES  
CONSTRUCTION PROJECT LOG RECORD

CONTROL SECTION 5608  
TRUNK HIGHWAY 29  
COUNTY Otter Tail  
DISTRICT 4A-4B

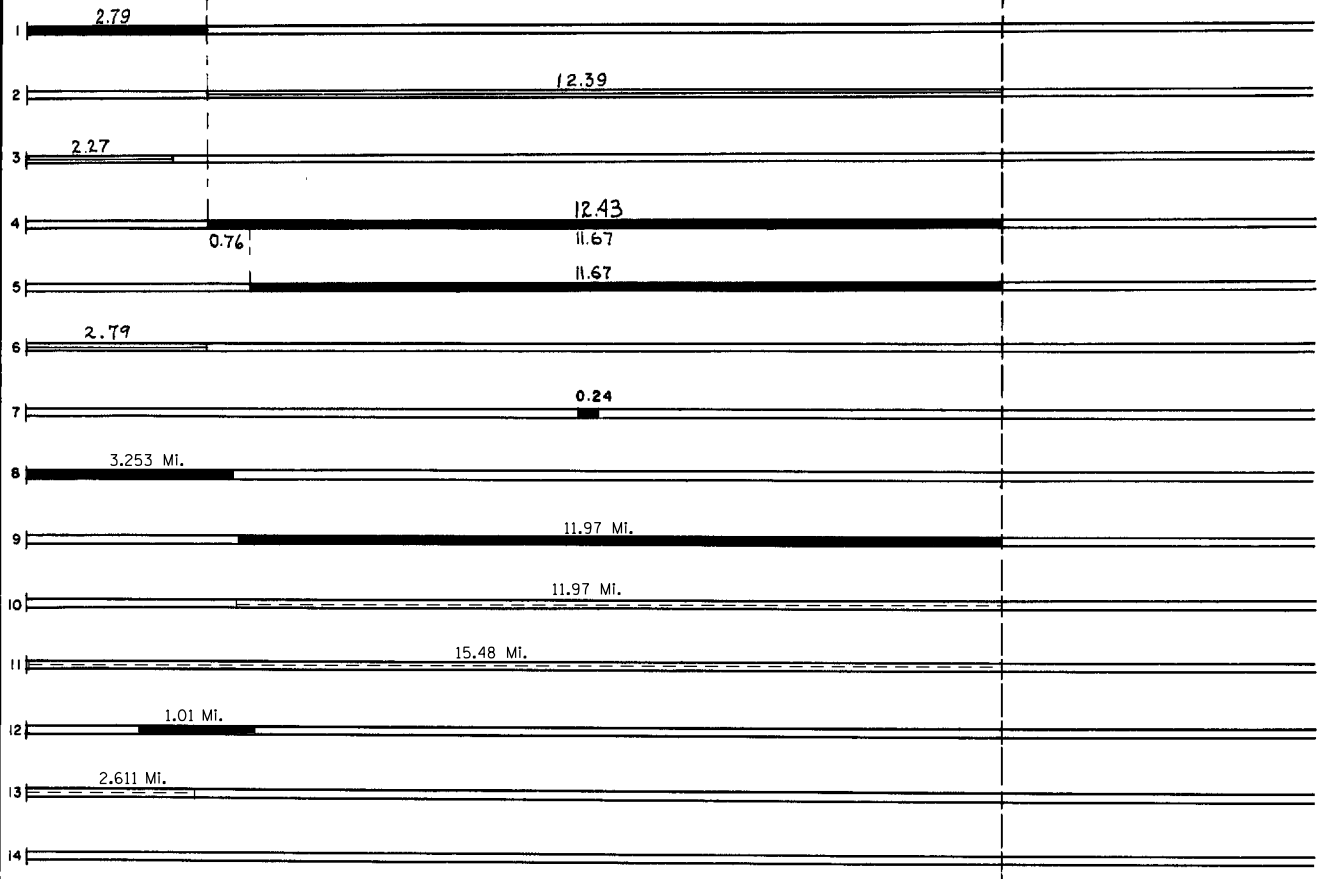
LIMITS: S. Co. Line - Jct. T.H. 210

Ref. Pt. 097+00.189 - 112+00.360

Douglas Co.  
Otter Tail Co.



YEAR BUILT	PROJECT NO.	DESCRIPTION	WIDTH	THICKNESS	REMARKS
C 1963	5608-11	Plant Mix Bit	24'-28'	3"	
M 1964	c	Light Bit Seal	25'		RS-2K, 23488 Gal. Agg. 807 C.Y.
M 1967	C	Light Bit Seal	25'		CRS-1, 6791 Gal. Agg. 240 C.Y.
C 1974	-14 F029-1 (34)	Grading, Agg. & Plant Mix Bit Base & Br.	26'	1 1/2"	
C 1974	-15 F029-1(35)	Plant Mix Bit. Gravel Shoulders	24' 10'	3"	
M 1979	SF	Agg. Shoulders	Var.	3"	
M 1984	SF	Seal Bit Overlay	24'	2"	Sp. 2331 - 300 Tons
C 1989	5608-17	Bit. Overlay	Var.	1 1/2" 1 1/2"	Spec. 2331 Spec. 2341
C 1992	5608-18	Bit. Overlay	28'	2 1/2"	Spec. 2341
M 1995	5608-95073	Major Crack Repair			
M 2002	8824-33	Agg. Seal			
C 2016	5608-23	Grading/agg. base Bit. Milling Bit. Surfacing	var. var. var.	6" var. var.	Class 6 Spec. 2360
M 2018	8824-143	Bit. Crack Seal	var.		Spec. 2331



YEARS FROM	TO	TOTAL MILES	UNINCORPORATED		INCORPORATED		RURAL		URBAN	
			RDWY. MI.	BR. MI.	RDWY. MI.	BR. MI.	RDWY. MI.	BR. MI.	RDWY. MI.	BR. MI.

REMARKS: Layout is to scale as of 1932