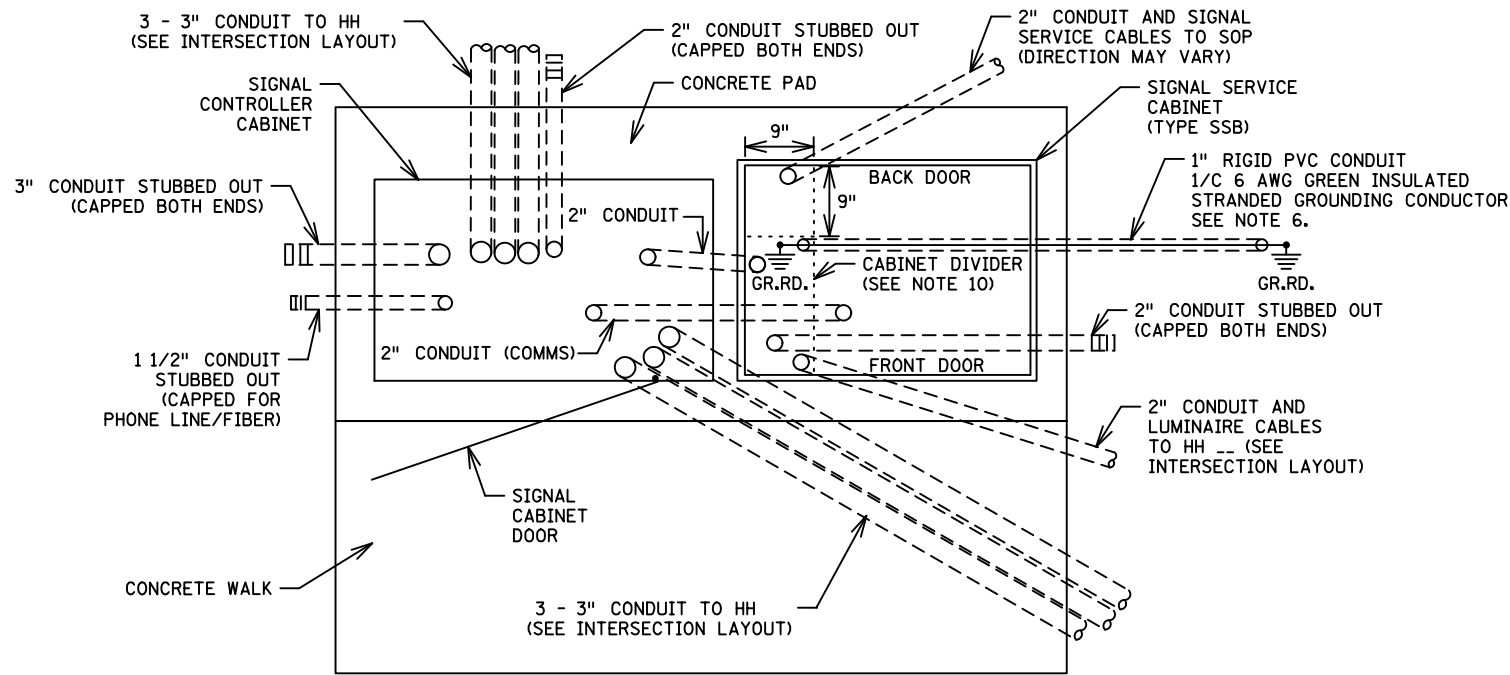


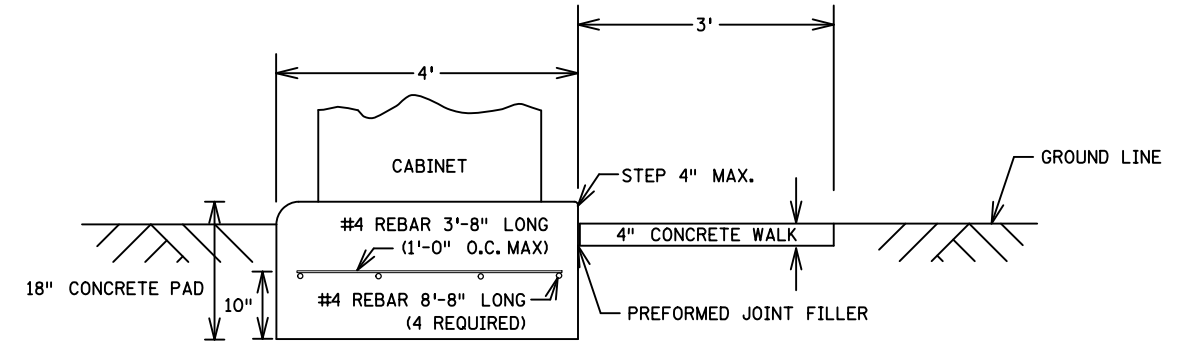
# TYPICAL PAD WITH CONTROLLER CABINET AND SERVICE CABINET

SEE INTERSECTION LAYOUT FOR CABLE INFORMATION (NOT TO SCALE)

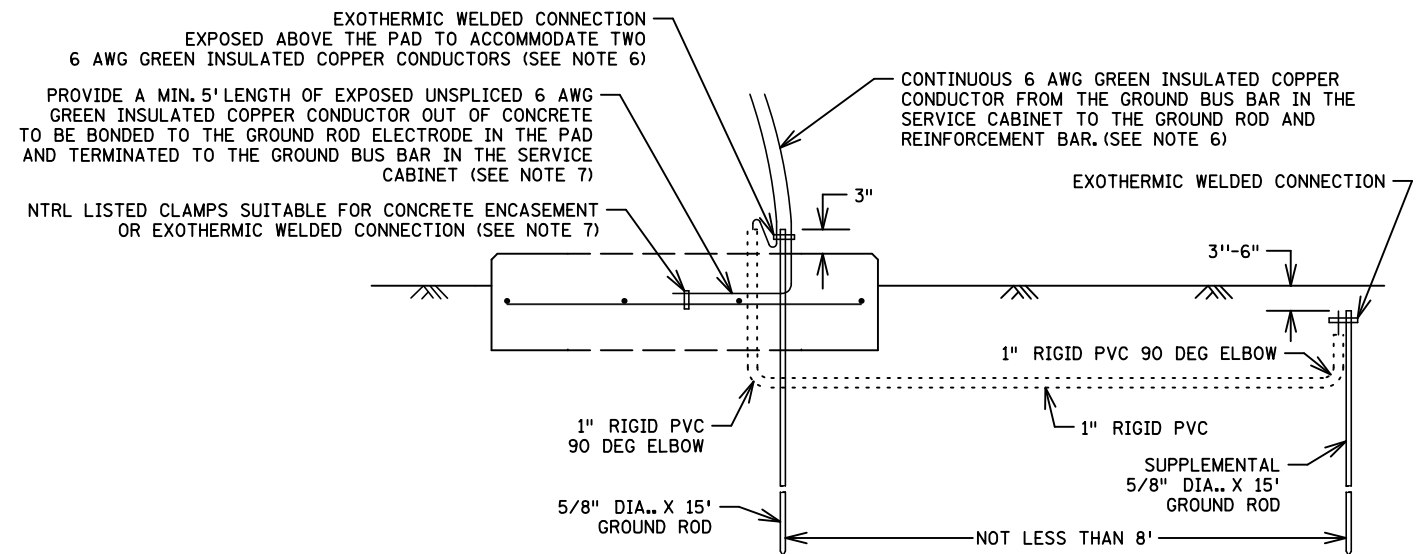
## PLAN VIEW



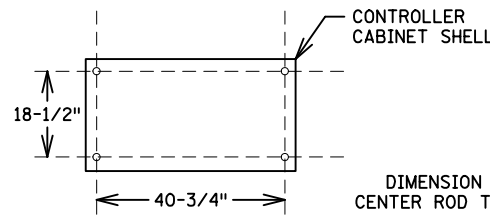
## SIDE VIEW



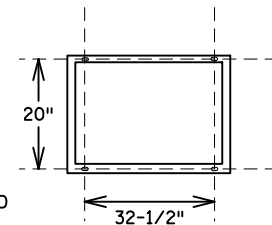
## GROUNDING ELECTRODE SYSTEM



### CONTROLLER CABINET TYPE "P" & "R" BOLT PATTERN



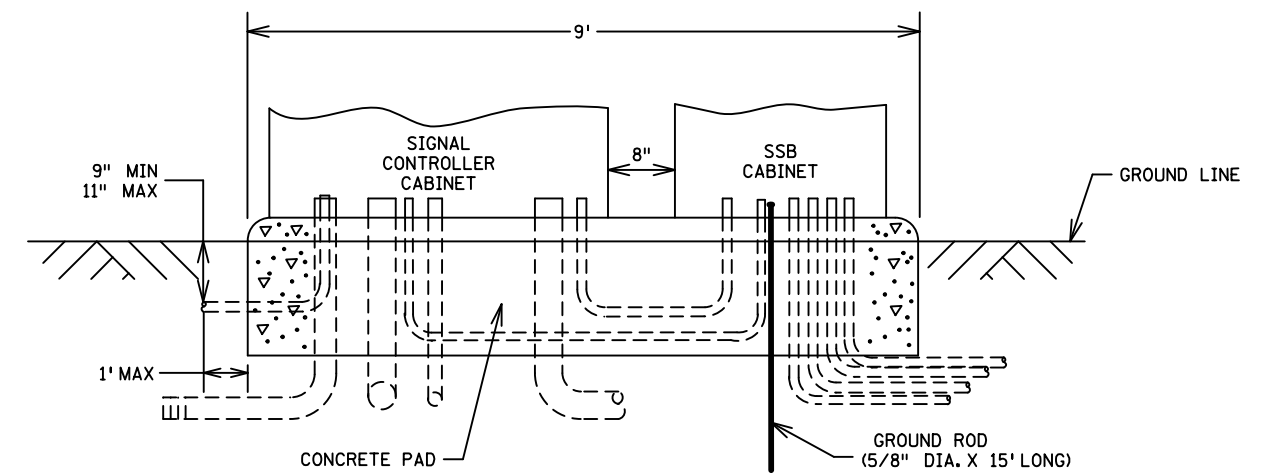
### S.S.B. SERVICE CABINET BOLT PATTERN



#### NOTES:

- THE DEPARTMENT WILL FURNISH THE ANCHOR RODS, NUTS, WASHERS AND RUBBER GASKET FOR THE CONTROLLER CABINET.
- BEVEL OR CHAMFER A 1/2 IN RADIUS ON THE OUTER EDGE OF THE PAD AND CONCRETE WALK.
- CAP THE TOP OF THE CONDUITS AFTER PLACEMENT UNTIL CABLES ARE PLACED.
- PROJECT THE CONDUIT 2" TO 3" ABOVE THE CONCRETE.
- USE CONCRETE MIX 3F52.
- SUPPLY TWO 15 FOOT GROUND ROD ELECTRODES IN ACCORDANCE WITH 2545.3R. PROVIDE ONE GROUND ROD IN THE EQUIPMENT PAD IN ACCORDANCE WITH 2545.3 F.3 AND THE OTHER OUTSIDE OF THE PAD WITH A MINIMUM OF 8 FEET OF SEPARATION BETWEEN ELECTRODES. BOND THE TWO GROUND RODS TOGETHER WITH ONE CONTINUOUS LENGTH UNSPLICED CONDUCTOR FROM THE OUTER MOST GROUND ROD TO THE GROUND BUS BAR IN THE CABINET. EXOTHERMICALLY WELD THE 6 AWG STRANDED GREEN INSULATED CONDUCTOR TO THE GROUND RODS. PLACE THE BONDING CONNECTION TO THE EQUIPMENT PAD GROUND ROD ABOVE THE CONCRETE. APPLY DE-OX COMPOUND TO THE GROUNDING CONNECTIONS AFTER FINAL ASSEMBLY.
- BOND A 6 AWG GREEN INSULATED GROUNDING CONDUCTOR TO THE REINFORCEMENT BAR MAT BEFORE CONCRETE POURING OPERATIONS. ENSURE THE CONDUCTOR IS PLACED IN THE LOAD SIDE OF THE CABINET. TERMINATE THE GREEN INSULATED 6 AWG GROUND CONDUCTOR ON THE GROUND BUS IN THE SERVICE CABINET WITHOUT SPLICES.
- ENSURE CONDUIT WITHIN THE PAD FROM ONE CABINET TO ANOTHER IS FULLY ENCASED IN CONCRETE.
- PLACE THE CONDUITS AS DIRECTED BY THE ENGINEER. ENSURE THE CONDUITS DO NOT INTERFERE WITH THE SUPPORTING MEMBERS OR DIVIDERS OF THE CABINET.
- ENSURE CONDUITS ARE PLACED TO THE LEFT OF THE DIVIDER AS SHOWN ON THE DETAIL.
- PLACE ANCHOR RODS AS SHOWN ON THE DETAIL AND PROJECT 3 IN TO 4 IN ABOVE THE CONCRETE.
- CENTER THE CABINETS ON THE PAD (LEFT & RIGHT) AS SHOWN ON THE DETAIL.
- CENTER REINFORCEMENT BAR MAT IN CONCRETE PAD.

## FRONT VIEW



DISTRICT #: Metro  
 I/PLOT NAME: SSB Equipment Pad Detail (2-22-18)  
 PATH & FILENAME: OTST\Signals\Details\EquipmentPadLayout\SSB Equipment Pad Detail (2-22-18).dgn  
 PLOTTED/REVISED: 22-FEB-2018

BY	DATE	REVISIONS	SYSTEM ID:	T.E.	S.A.P. NO.	DRAWN BY:	CKD BY:	DATE: 02-22-18
			METER ADDRESS:		CERTIFIED BY _____	LIC. NO. _____	DATE: _____	
			OLD SYSTEM ID:		STATE PROJ. NO. _____	(T.H.)	SHEET NO. _____	OF SHEETS _____

EQUIPMENT PAD LAYOUT  
(TYPE SSB SERVICE CABINET)