



## Section 03: Maximum Vehicle Dimensions

## Section 03

### Maximum Vehicle Dimensions

Minn. Stat. § 169.80 and 169.81

When operating a vehicle on Minnesota highways a special transportation permit is required if the vehicle and/or load exceeds the maximum legal vehicle dimensions. The permit, in paper or electronic format, is required to be carried in the vehicle during transit.

The following maximum dimensions may be operated on Minnesota's highways without special permit:

**Width: 8'6"** Exclusive of side rear view mirrors or load securement devices which may extend an additional 3" on each side of vehicle.

**Height: 13'6"**

**Length:** Maximum length limits, to include front and rear overhang, are listed in the following table:

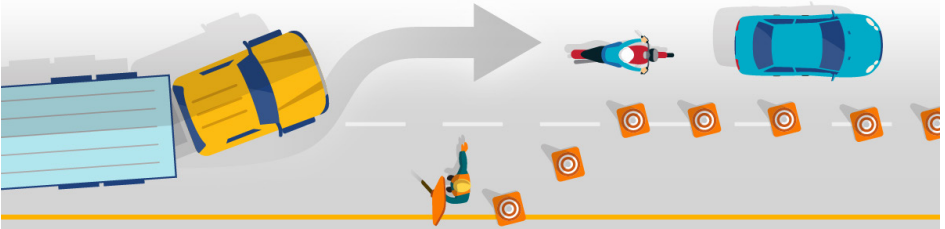
Vehicle	Maximum Length
Single motor vehicle	45'
Mobile crane	48'
Each trailer or semi-trailer of a twin trailer combination on designated routes	28'6"
Trailer of two-vehicle combination	45'
Semi-trailer of two-vehicle combination,	53' (if greater than 48' the distance from kingpin to center of the rear axle group cannot exceed 43')
Truck-tractor with semi-trailer	75'
Two-vehicle combination other than a truck-tractor and semi-trailer	75'
Drive-away saddlemount Drive-away saddlemount transporter combinations	97'

**Maximum Number of Vehicles in Combination:** No more than two commercial vehicles in combination may be operated on Minnesota highways except for 28'6" twin-trailer combinations operating on designated twin-trailer routes.

**Recreational Vehicles Combinations:** Minnesota allows three-unit RV combinations consisting of a full size pickup truck or recreational truck-tractor towing a 5th wheel trailer and one additional trailer that is carrying only a watercraft, motorcycle, motorized bicycle, off-highway motorcycle, snowmobile, all-terrain vehicle, motorized golf cart, or equestrian equipment or supplies, if all the following conditions are met:

1. The combination does not consist of more than three vehicles, and the towing rating of the pickup truck is equal to or greater than the total weight of all vehicles being towed;
2. The combination does not exceed 70 feet in length;
3. The operator of the combination is at least 18 years of age;
4. The trailer carrying the recreational vehicle combination;
5. The trailers in the combination are connected to the pickup truck and each other in conformity with Minn. Stat. § 169.82; and
6. The combination is not operated within the seven-county metropolitan area, as defined in Minn. Stat. § 473.121 subd. 2, during the hours of 6:00 a.m. to 9:00 a.m. and 4:00 p.m. to 7:00 p.m. on Mondays through Fridays.

# MOVE EARLY INTO OPEN LANES DURING WORK ZONE TRAFFIC SHIFTS



**OUR** ROADS SAFETY  
Partnership for Responsible Driving  
[www.ShareTheRoadSafely.gov](http://www.ShareTheRoadSafely.gov)

