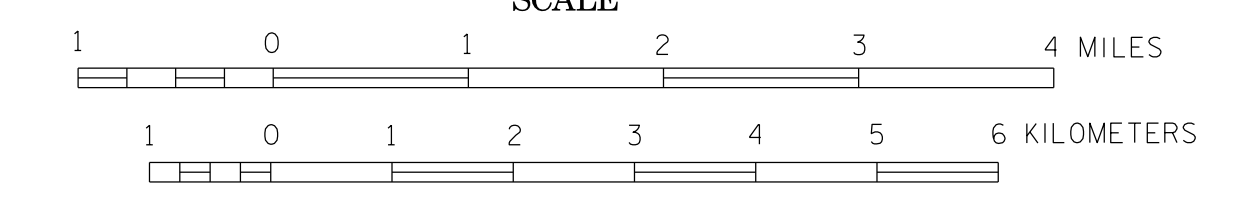


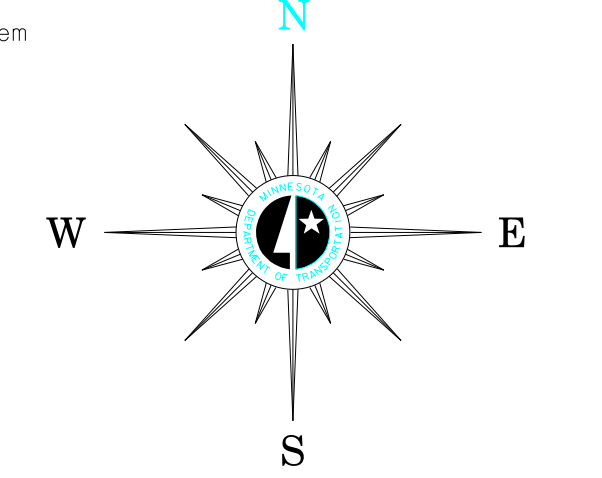
BICYCLE MAP CASS COUNTY MINNESOTA

PREPARED BY THE
MINNESOTA DEPARTMENT OF TRANSPORTATION
OFFICE OF TRANSPORTATION SYSTEM MANAGEMENT



2016
BASIC DATA - 2015

Projections:
Minnesota Coordinate System
Central Zone
Lambert Conformal Conic
North American Datum
of 1983



LEGEND

- | | |
|--|---|
| (Roadways with shoulders less than 4 feet) | (Roadways with shoulders greater than 4 feet) |
| 0 - 750 (Fewer than 3 cars / min) | 751 - 2500 (3 cars / min) |
| 751 - 2500 (3 cars / min) | 2501 - 10,000 (12 cars / min) |
| 2501 - 10,000 (12 cars / min) | 10,000+ (24+ cars / min) |
| Gravel Roadway | Federal, State and Regional Bicycle Trails |
| Mississippi River Trail | Interstate / Bicycles Prohibited |
| State or National Forests | |

ROAD AND ROADWAY FEATURES

- PROJECTED ROAD
- PRIMITIVE ROAD
- UNIMPROVED ROAD
- GRADED AND DRAINED ROAD
- SOIL SURFACE ROAD
- GRAVEL OR STONE ROAD
- BITUMINOUS ROAD
- PAVED ROAD
- DIVIDED ROAD
- TRUNK HIGHWAY UNDER CONSTRUCTION
- ROADS IN UNINCORPORATED COMPACTS, EXTENSIONS OF LOCAL ROADS (NOT F.A.S.) WITHIN MUNICIPALITIES AND FRONTAGE ROADS
- GRADE SEPARATION
- FULL TRAFFIC INTERCHANGE
- PARTIAL TRAFFIC INTERCHANGES INDICATING TRAFFIC MOVEMENT

ROAD SYSTEM DESIGNATIONS

- INTERSTATE TRUNK HIGHWAY
- U.S. NUMBERED TRUNK HIGHWAY
- STATE NUMBERED TRUNK HIGHWAY
- COUNTY STATE AID HIGHWAY
- COUNTY STATE AID IN ADJOINING COUNTY
- TERMINATION OF DESIGNATED ROUTE

BOUNDARIES

- NATIONAL OR STATE
- COUNTY
- CIVIL TOWNSHIP
- CONGRESSIONAL TOWNSHIP (U.S. LAND)
- CORPORATE LINE
- SECTION LINE
- CONGESTED AREA
- INDIAN RESERVATION

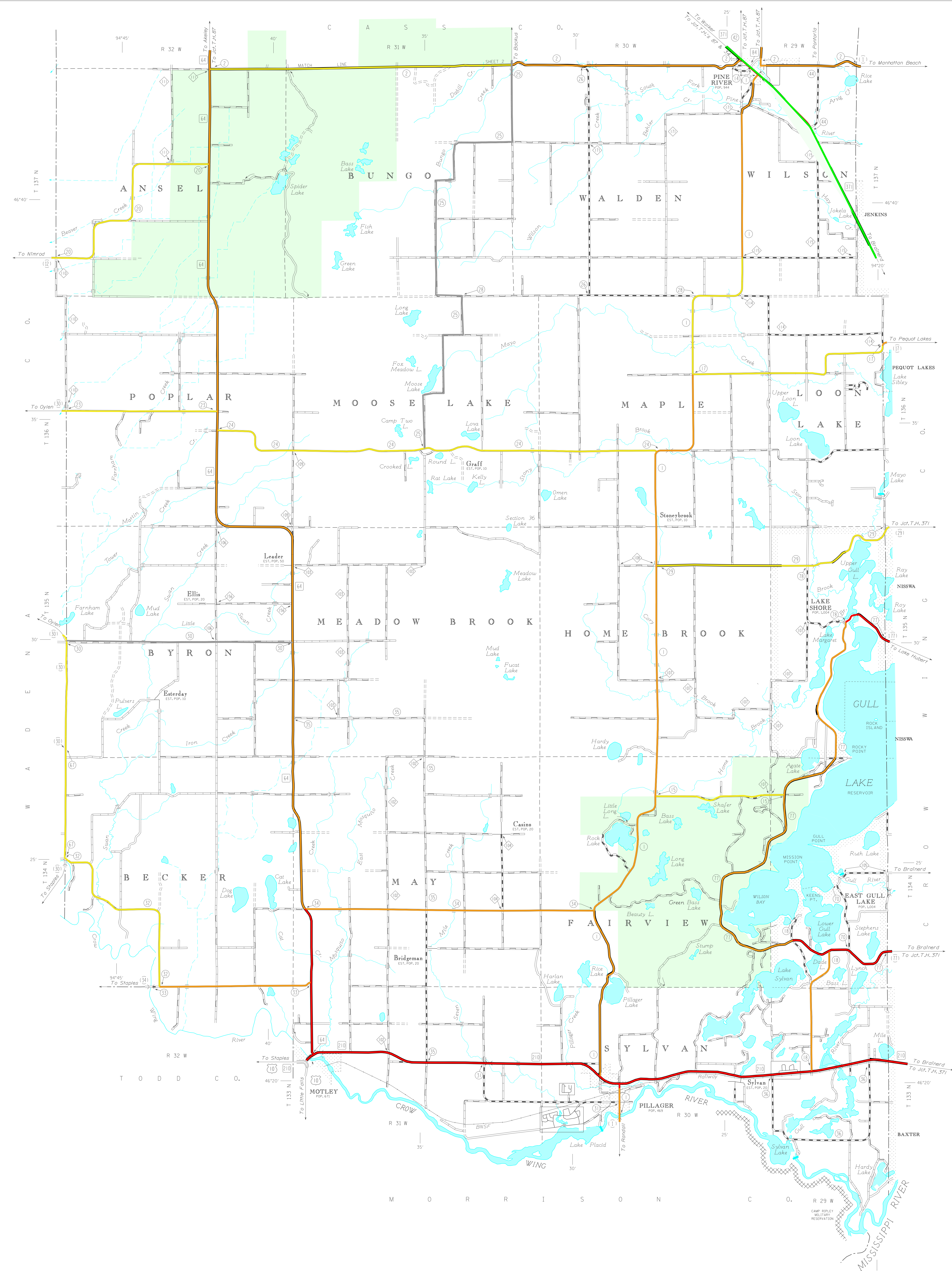
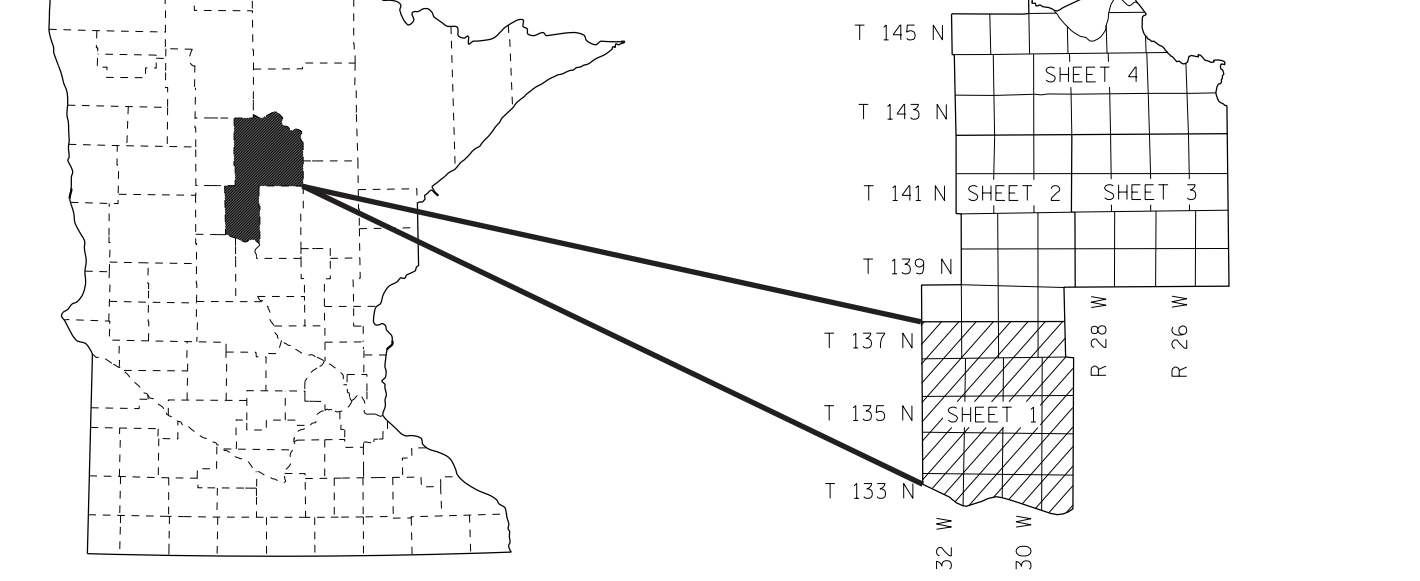
DRAINAGE

- INTERMITTENT STREAM
- NARROW STREAM
- WIDE STREAMS
- MARSH OR SWAMP LAND
- DRAINAGE DITCH
- LAKE OR POND

CITY CENTERS

- STATE CAPITAL
- COUNTY SEAT
- CITY CENTER
- INCORPORATED CITY (GENERALIZED)

Outline Map of Minnesota showing location of the County within the State. Shaded portion is area delineated on this sheet. Area of this County: 2422 Sq. Miles. Land Area: 2033 Sq. Miles. 2010 Total County Population: 26,847



NOTE: FOR DETAIL OF COUNTY STATE AID HIGHWAYS AND COUNTY ROADS IN INCORPORATED PLACES, SEE MAPS OF MUNICIPALITIES.