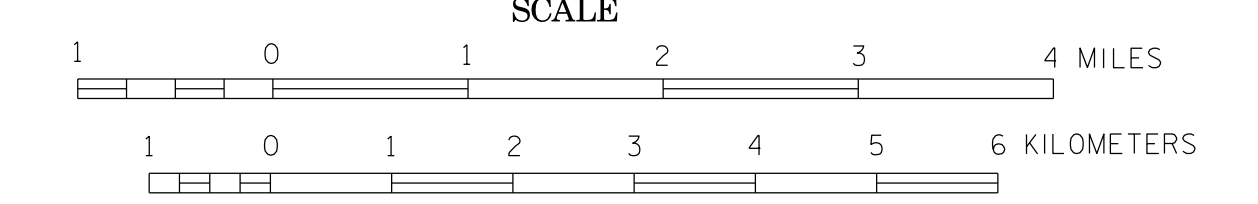


# BICYCLE MAP LAKE COUNTY MINNESOTA

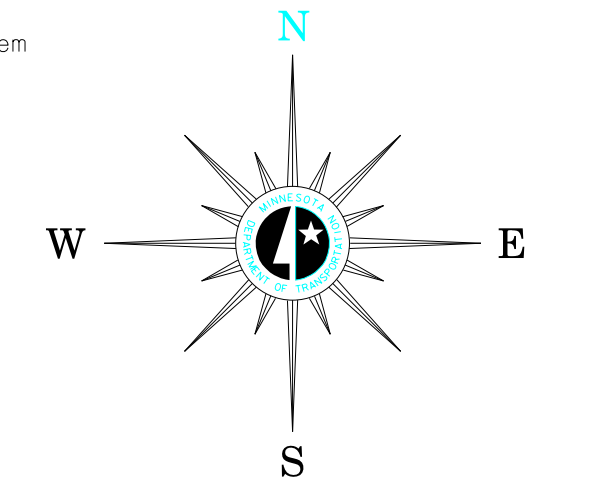
PREPARED BY THE  
MINNESOTA DEPARTMENT OF TRANSPORTATION  
OFFICE OF TRANSPORTATION SYSTEM MANAGEMENT



2016  
BASIC DATA - 2015

Projections:  
Minnesota Coordinate System  
North Zone  
Lambert Conformal Conic

North American Datum  
of 1983



## LEGEND

- |  |  |   |
|--|--|---|
| Roadways with shoulders less than 4 feet | 0-750 (Fewer than 3 cars / min)            | Roadways with shoulders greater than 4 feet |
|  | 751-2500 (3 cars / min)                    |   |
|  | 2501-10,000 (12 cars / min)                |   |
|  | 10,000+ (24+ cars / min)                   |   |
| Gravel Roadway                           | Federal, State and Regional Bicycle Trails |   |
| Massages River Trail                     | Interstate / Bicycles Prohibited           |   |
| State or National Forests                |  |   |

## ROAD AND ROADWAY FEATURES

- PROJECTED ROAD
- PRIMITIVE ROAD
- UNIMPROVED ROAD
- GRADED AND DRAINED ROAD
- SOIL SURFACE ROAD
- GRAVEL OR STONE ROAD
- BITUMINOUS ROAD
- PAVED ROAD
- DIVIDED ROAD
- TRUNK HIGHWAY UNDER CONSTRUCTION
- ROADS IN UNINCORPORATED COMPACTS, EXTENSIONS OF LOCAL ROADS (NOT F.A.S.'S WITHIN MUNICIPALITIES AND FRONTAGE ROADS)
- GRADE SEPARATION
- FULL TRAFFIC INTERCHANGE
- PARTIAL TRAFFIC INTERCHANGES INDICATING TRAFFIC MOVEMENT

## ROAD SYSTEM DESIGNATIONS

- INTERSTATE TRUNK HIGHWAY
- U.S. NUMBERED TRUNK HIGHWAY
- STATE NUMBERED TRUNK HIGHWAY
- COUNTY STATE AID HIGHWAY
- COUNTY ROAD
- COUNTY STATE AID IN ADJOINING COUNTY
- TERMINATION OF DESIGNATED ROUTE

## BOUNDARIES

- NATIONAL OR STATE
- COUNTY
- CIVIL TOWNSHIP
- CONGRESSIONAL TOWNSHIP (U.S. LAND)
- CORPORATE LINE
- SECTION LINE
- CONGESTED AREA
- INDIAN RESERVATION

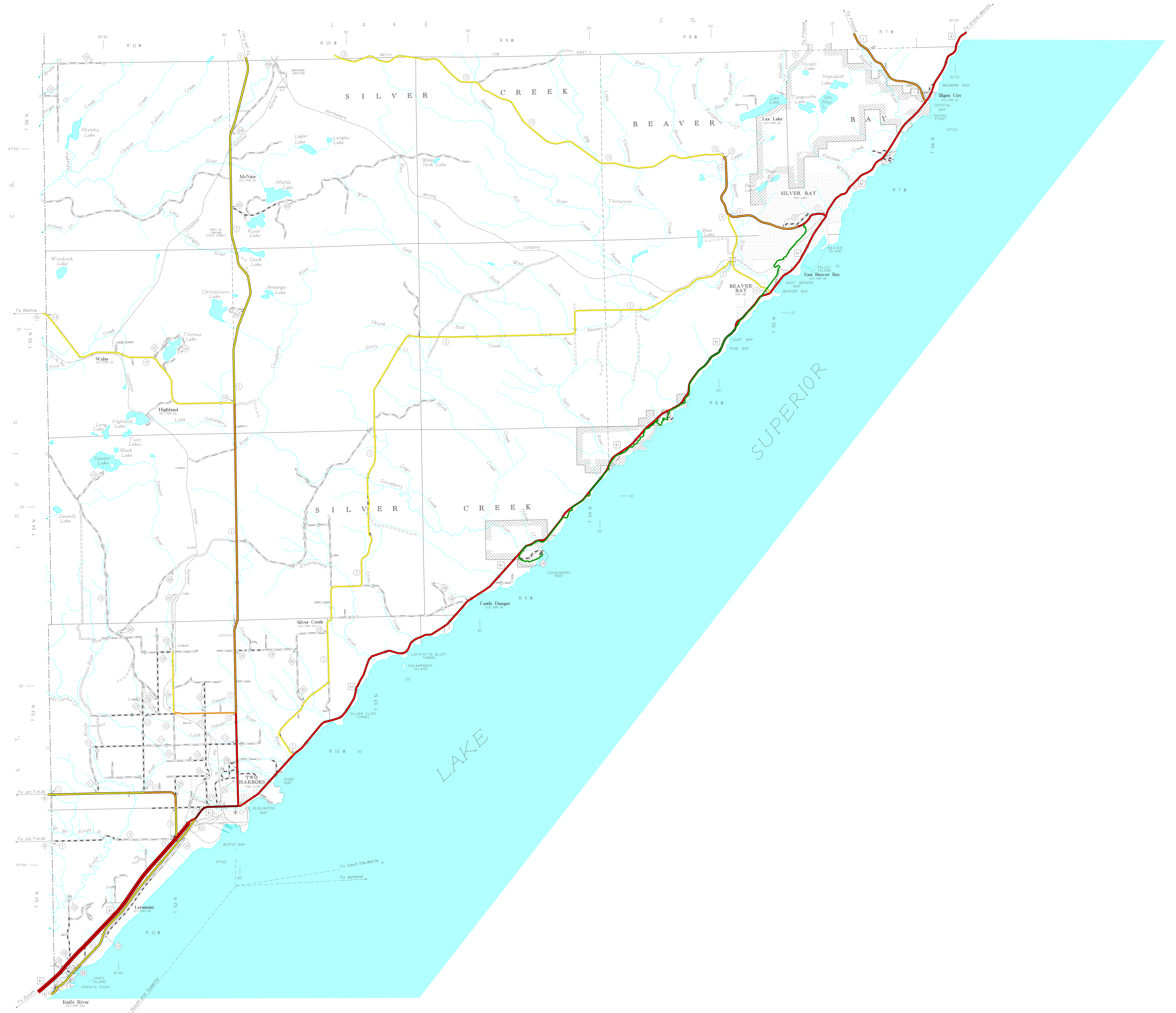
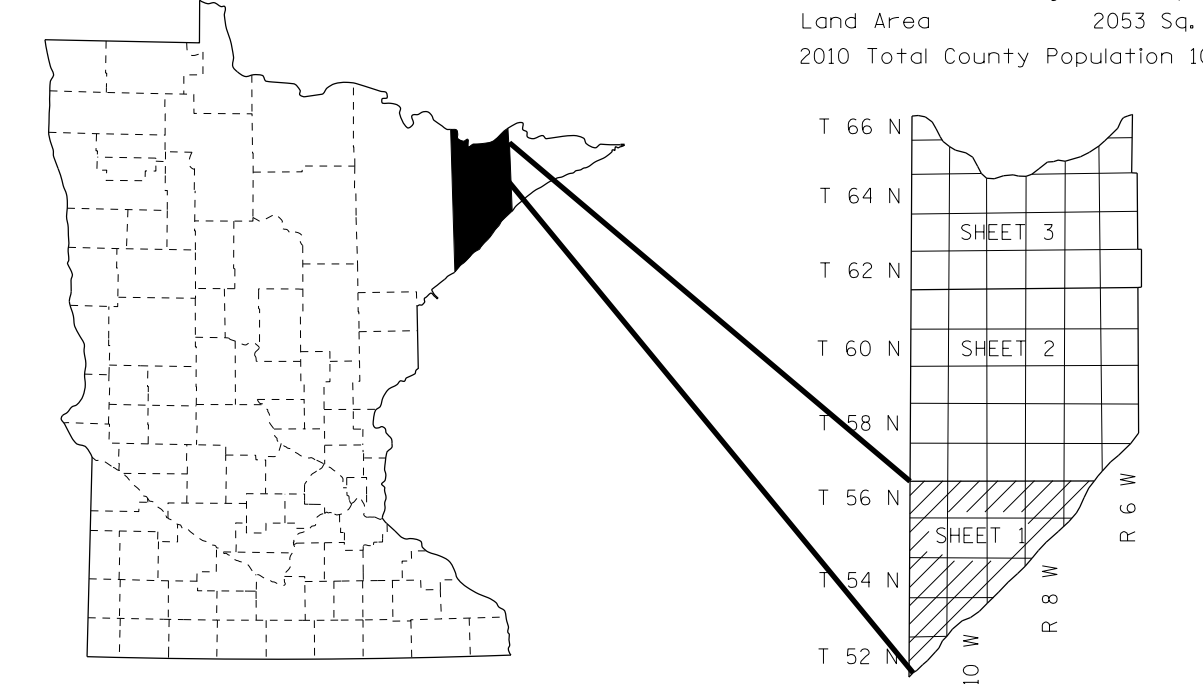
## DRAINAGE

- INTERMITTENT STREAM
- NARROW STREAM
- WIDE STREAMS
- MARSH OR SWAMP LAND
- DRAINAGE DITCH
- LAKE OR POND

## CITY CENTERS

- STATE CAPITAL
- COUNTY SEAT
- CITY CENTER
- INCORPORATED CITY (GENERALIZED)

Outline Map of Minnesota showing location of the County within the State. Area of this County: 299 Sq. Miles. Land Area: 2053 Sq. Miles. 2000 Total County Population: 30,866.



NOTE: FOR DETAIL OF COUNTY STATE AID HIGHWAYS AND COUNTY ROADS IN INCORPORATED PLACES, SEE MAPS OF MUNICIPALITIES.