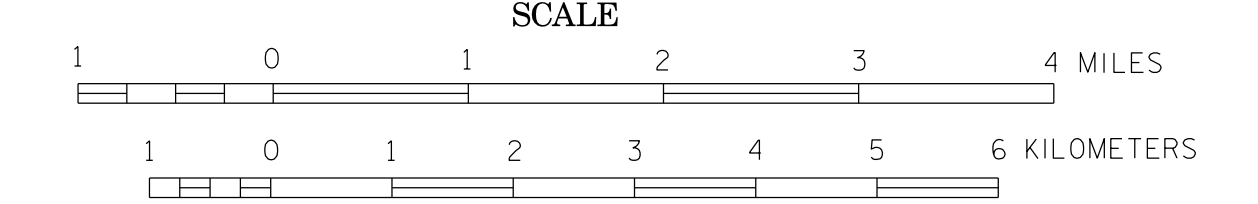


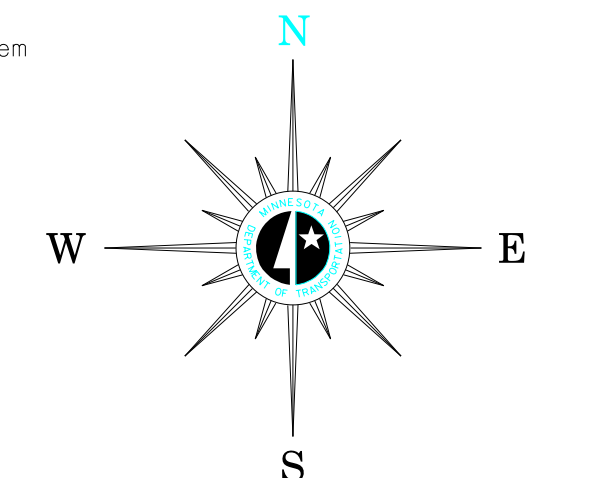
BICYCLE MAP PINE COUNTY MINNESOTA

PREPARED BY THE
MINNESOTA DEPARTMENT OF TRANSPORTATION
OFFICE OF TRANSPORTATION SYSTEM MANAGEMENT



2016
BASIC DATA - 2015

Projection: Minnesota Coordinate System
Central Zone
Lambert Conformal Conic
North American Datum of 1983



LEGEND

- (Roadways with shoulders less than 4 feet)
 - 0-750 (fewer than 3 cars / min)
 - 751-2500 (3 cars / min)
 - 2501-10,000 (12 cars / min)
 - 10,000+ (24+ cars / min)
- (Roadways with shoulders greater than 4 feet)
 - Gravel Roadway
 - Federal, State and Regional Bicycle Trails
 - Mississippi River Trail
 - Interstate / Bicycles Prohibited
 - State or National Forests

ROAD AND ROADWAY FEATURES

- PROJECTED ROAD
- PRIMITIVE ROAD
- UNIMPROVED ROAD
- GRADED AND DRAINED ROAD
- SOIL SURFACE ROAD
- GRAVEL OR STONE ROAD
- BITUMINOUS ROAD
- PAVED ROAD
- DIVIDED ROAD
- TRUNK HIGHWAY UNDER CONSTRUCTION
- ROADS IN UNINCORPORATED COMPACTS, EXTENSIONS OF LOCAL ROADS (NOT F.A.S.) WITHIN MUNICIPALITIES AND FRONTAGE ROADS
- GRADE SEPARATION
- FULL TRAFFIC INTERCHANGE
- PARTIAL TRAFFIC INTERCHANGES INDICATING TRAFFIC MOVEMENT

ROAD SYSTEM DESIGNATIONS

- INTERSTATE TRUNK HIGHWAY
- U.S. NUMBERED TRUNK HIGHWAY
- STATE NUMBERED TRUNK HIGHWAY
- COUNTY STATE AID HIGHWAY
- COUNTY ROAD
- COUNTY STATE AID IN ADJOINING COUNTY
- TERMINATION OF DESIGNATED ROUTE

BOUNDARIES

- NATIONAL OR STATE
- COUNTY
- CIVIL TOWNSHIP
- CONGRESSIONAL TOWNSHIP (U.S. LAND)
- CORPORATE LINE
- SECTION LINE
- CONGESTED AREA
- INDIAN RESERVATION

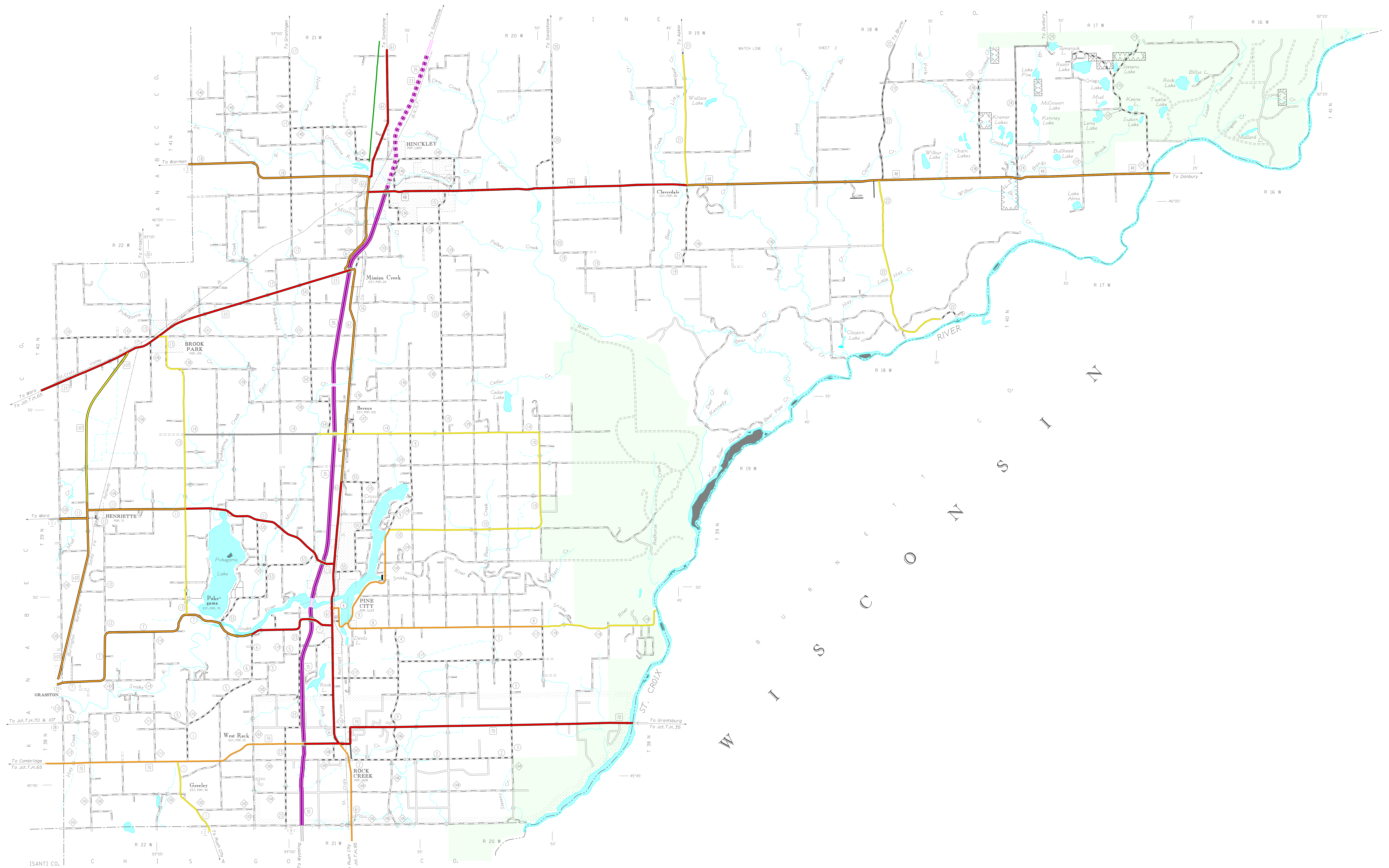
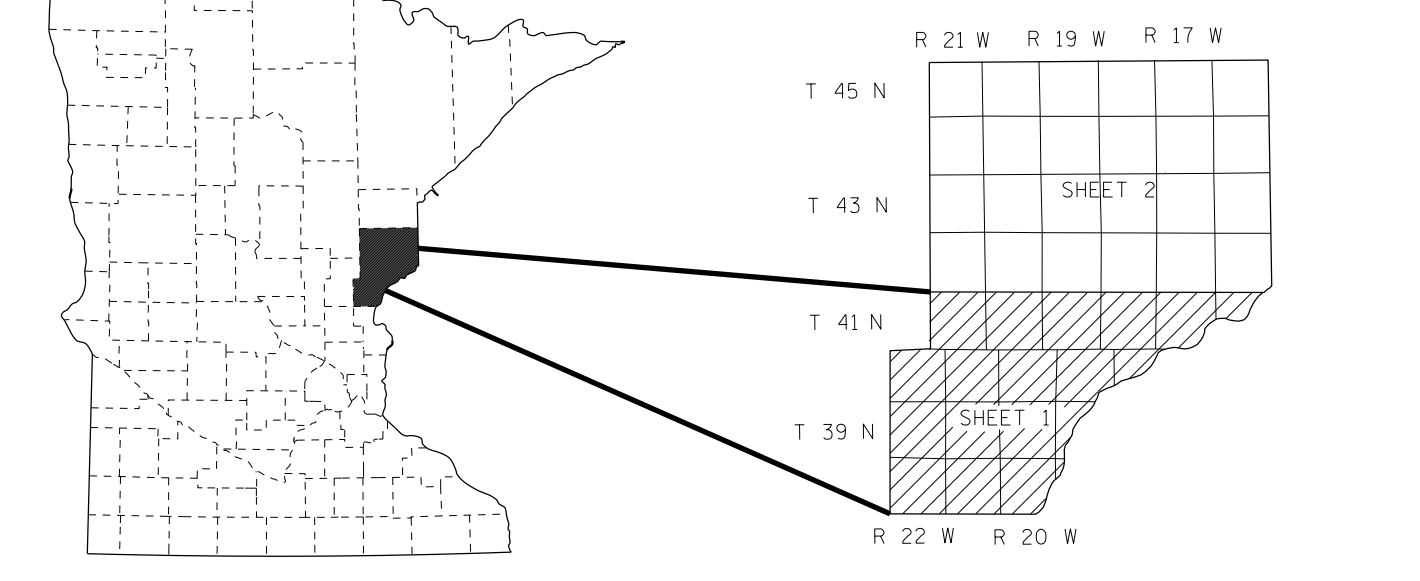
DRAINAGE

- INTERMITTENT STREAM
- NARROW STREAM
- WIDE STREAMS
- MARSH OR SWAMP LAND
- DRAINAGE DITCH
- LAKE OR POND

CITY CENTERS

- STATE CAPITAL
- COUNTY SEAT
- CITY CENTER
- INCORPORATED CITY (GENERALIZED)

Outline Map of Minnesota showing location of the County within the State. Shaded portion being area depicted on this sheet. Outline Map of the County, Shaded portion being area depicted on this sheet. Area of this County 1434 Sq. Miles. Land Area 1421 Sq. Miles. 2000 Total County Population 29,750



To request information from this document in an alternative format, call 651-362-4718 or 1-800-657-3774 (Greater Minnesota), 711 or 1-800-657-3509 (Minnesota Relay). You may also send an e-mail to ADRequest.dot@state.mn.us. (Please request at least one week in advance.)

NOTE: FOR DETAIL OF COUNTY STATE AID HIGHWAYS AND COUNTY ROADS IN INCORPORATED PLACES, SEE MAPS OF MUNICIPALITIES.