

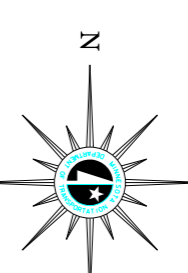
# BICYCLE MAP STEARNS COUNTY MINNESOTA

PREPARED BY THE  
MINNESOTA DEPARTMENT OF TRANSPORTATION  
OFFICE OF TRANSPORTATION SYSTEM MANAGEMENT

2016  
SCALE  
1" = 1 MILE  
1" = 1.609344 KILOMETERS

PROJECTIONS  
Minnesota Coordinate System  
Lambert Conformal Conic

North American Datum of 1983



## LEGEND

- Roadways with traffic volume > 1000
- Roadways with traffic volume 500-1000
- Roadways with traffic volume 250-500
- Roadways with traffic volume 100-250
- Roadways with traffic volume 50-100
- Roadways with traffic volume < 50
- State or Federal Roadway
- Municipal Roadway
- Private Roadway
- Roadway with traffic volume < 50
- Roadway with traffic volume < 50
- Roadway with traffic volume < 50

## ROAD AND ROADWAY FEATURES

- PROJECTED ROAD
- UNIMPROVED ROAD
- GRAVEL OR STONE ROAD
- BITUMINOUS ROAD
- TRUNK HIGHWAY UNDER CONSTRUCTION
- EXTENSIONS OF LOCAL ROADS NOT FRONTAGE ROADS
- GRADE SEPARATION
- FULL TRAFFIC INTERCHANGE
- PARTIAL TRAFFIC INTERCHANGES
- INDICATING TRAFFIC MOVEMENT

## ROAD SYSTEM DESIGNATIONS

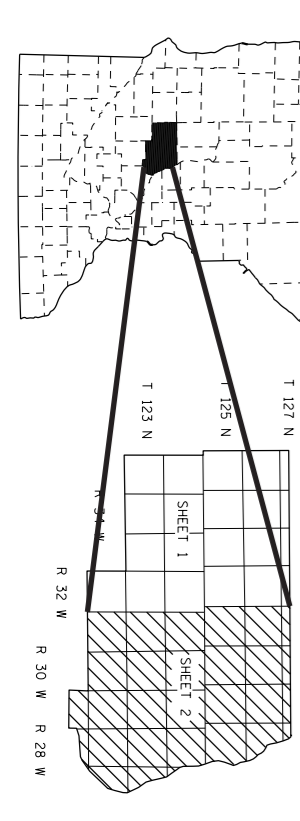
- INTERSTATE TRUNK HIGHWAY
- U.S. NUMBERED TRUNK HIGHWAY
- STATE STATE AID HIGHWAY
- COUNTY STATE AID HIGHWAY
- COUNTY ROAD
- COUNTY STATE AID IN ADJOINING COUNTY
- TERMINATION OF DESIGNATED ROUTE

## BOUNDARIES

- NATIONAL OR STATE
- COUNTY
- CITY CENTER
- CITY CENTER
- INCORPORATED CITY (GENERALIZED)

## DRAINAGE

- INTERMITTENT STREAM
- NARROW STREAM
- WIDE STREAM
- WASH OR SWAMP LAND
- DRAINAGE DITCH
- LAKE OR POND



NOTE: DETAIL OF COUNTY STATE AID HIGHWAYS AND COUNTY ROADS IN UNINCORPORATED TOWNSHIPS AND VILLAGES IS SHOWN IN THIS MAP.

