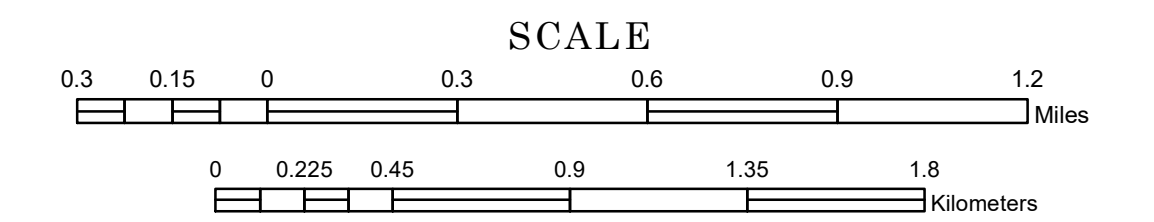


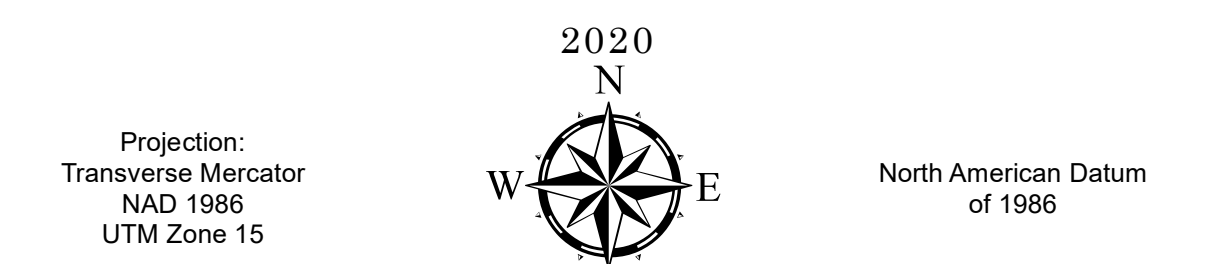
TRIBAL GOVERNMENT MAP
RED LAKE COMMUNITY

PREPARED BY THE
 MINNESOTA DEPARTMENT OF TRANSPORTATION
 OFFICE OF TRANSPORTATION SYSTEM MANAGEMENT

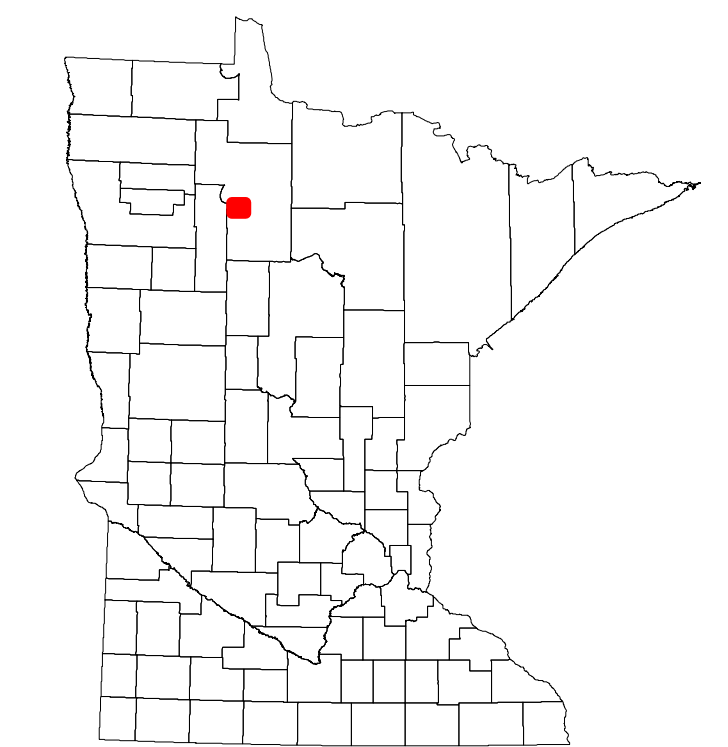
IN COOPERATION WITH
 U.S. DEPARTMENT OF TRANSPORTATION
 FEDERAL HIGHWAY ADMINISTRATION



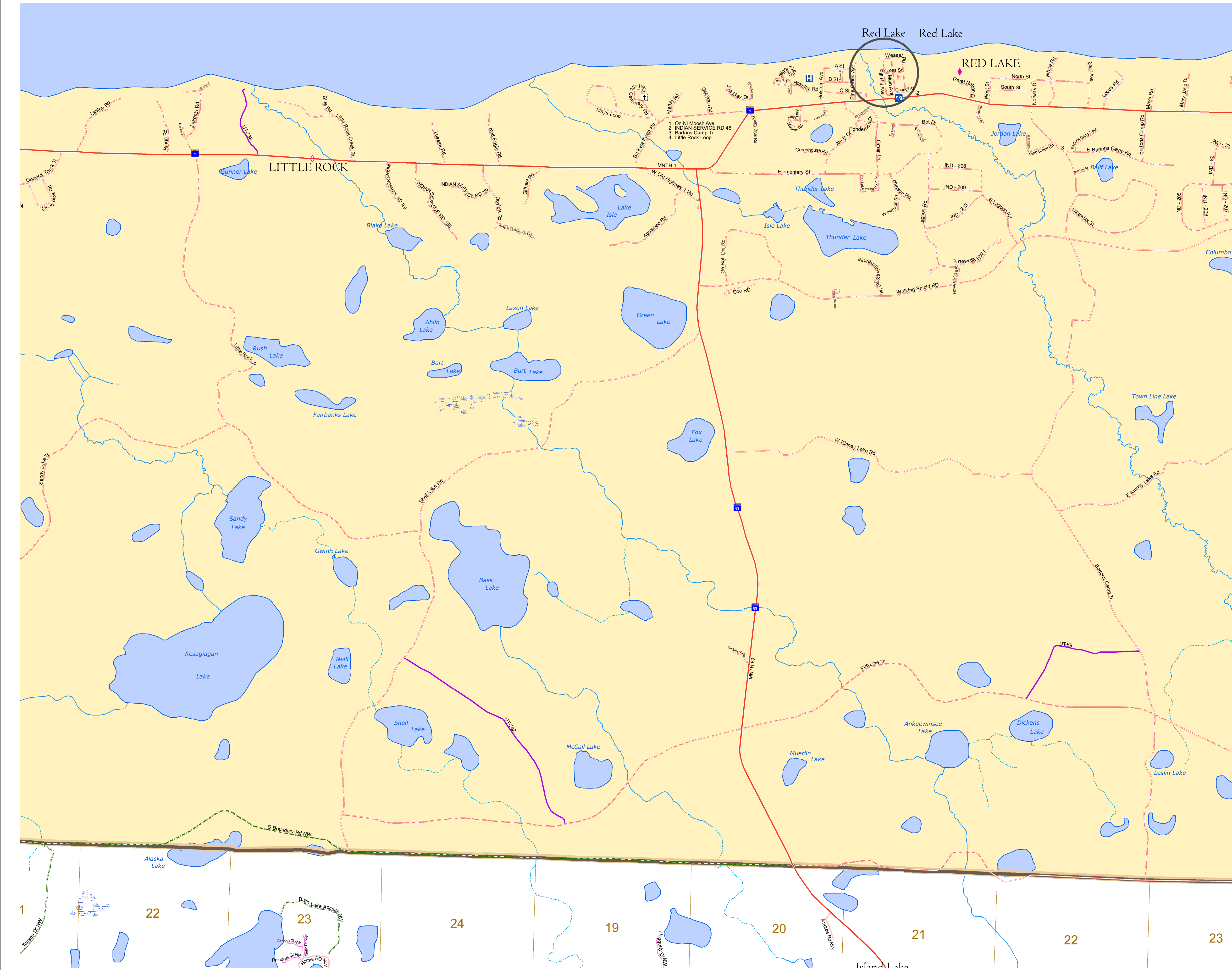
1 in = 1,600 ft



| | |
|----------------------------------|--|
| ROAD AND ROADWAY FEATURES | PUBLIC SERVICE FEATURES |
| INTERSTATE | MINDOT OFFICE |
| US HIGHWAY | MINDOT TRUCK STATION |
| MN HIGHWAY | HIGHWAY PATROL DISTRICT OFFICE |
| COUNTY STATE AID HIGHWAY | STATE TRAVEL INFORMATION CENTER |
| COUNTY ROAD | REST AREA (Full Service) |
| MUNICIPAL STATE AID STREET | REST AREA (Vault Toilet) |
| PRIVATE STREET/ROAD | WAYSIDE (Vault or Pit Toilet) |
| TOWNSHIP ROAD | LOCAL PARK |
| UNORGANIZED TERRITORY ROAD | PUBLIC ACCESS POINT |
| RAMP OR CONNECTOR | FAIRGROUNDS |
| INTERSTATE EXIT | PORT OF ENTRY |
| GREAT RIVER ROAD | PARK AND RIDE LOT |
| OTHER ROADS | MN STATE COLLEGE AND UNIVERSITY SYSTEM (MNSCU) |
| Fenceless | UNIVERSITY OF MN SYSTEM |
| State Park | |
| State Forest | |
| Bureau Service | |
| National Forest | |
| Municipal | |
| | CULTURAL FEATURES |
| | STATE HISTORICAL MARKER |
| | HISTORIC DISTRICT |
| | HISTORIC SITE |
| | MONUMENT |
| | BOUNDARY FEATURES |
| | TRIBAL LAND |
| | COUNTY |
| | MUNICIPALITY |
| | ADJACENT MUNICIPALITY |
| | FEDERAL ADJUSTED URBAN AREA (2014) |
| | MILITARY |
| | VOYAGEURS NATIONAL PARK |
| | BOUNDARY WATERS CANOE AREA WILDERNESS |
| | STATE PARK |
| | REGIONAL PARK |
| | NATIONAL FOREST |
| | NATIONAL AND STATE FOREST |
| | STATE FOREST |
| | NATIONAL TRAIL |
| | WILDLIFE REFUGE AREA |
| | WILDLIFE MANAGEMENT AREA |
| | HYDROLOGIC FEATURES |
| | RIVER OR STREAM (Perennial) |
| | LAKE, POND OR RESERVOIR |
| | STREAM (Intermittent) |
| | DRAINAGE DITCH |
| | WETLAND |
| | ISLAND OR LAND |
| | REGIONAL WATERSHED |
| | CITY CENTERS |
| | TRIBAL GOVERNMENT CENTER |
| | CITY CENTER |
| | LOCALLY KNOWN PLACE |
| | UNINCORPORATED COMMUNITY |



Population (U.S. Census 2000):



To request information from this document in an alternative format, call 651-366-4718 or 1-800-657-3774 (Greater Minnesota); 711 or 1-800-627-3529 (Minnesota Relay). You may also send an e-mail to ADarequest.dot@state.mn.us. (Please request at least one week in advance.)